

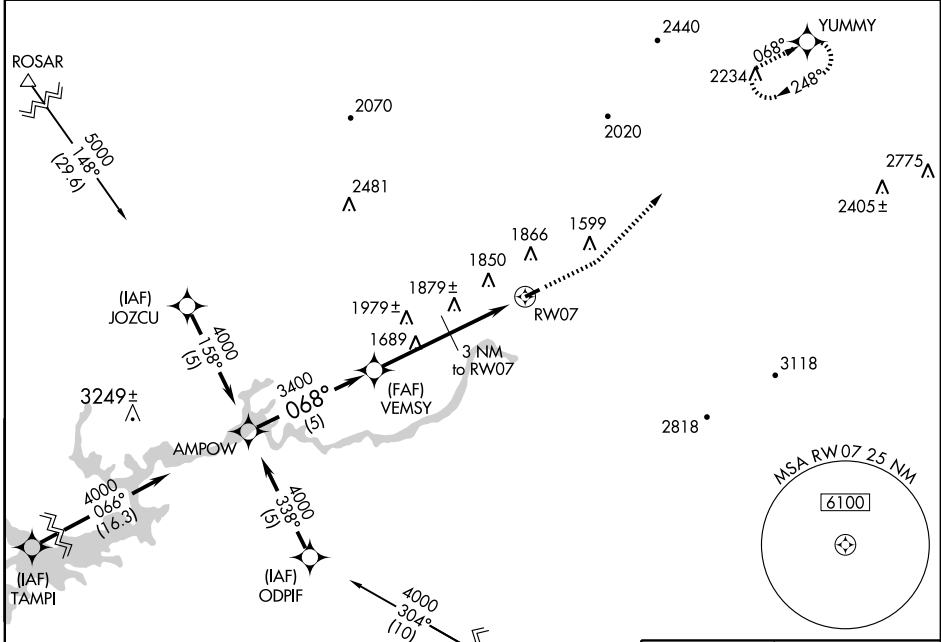
# GPS RWY 7

ROGERSVILLE/HAWKINS COUNTY (RVN)

APP CRS <b>068°</b>	Rwy Idg <b>3502</b>
	TDZE <b>1255</b>
	Apt Elev <b>1255</b>

<p><b>▼</b> Obtain local altimeter setting on CTAF, if not received use Tri-Cities Rgnl altimeter setting.</p> <p><b>▲ NA</b></p>	<p><b>MISSED APPROACH:</b> Climb to 3000 then climbing left turn to 4500 direct YUMMY WP and hold.</p>
---	--

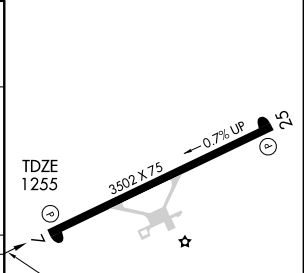
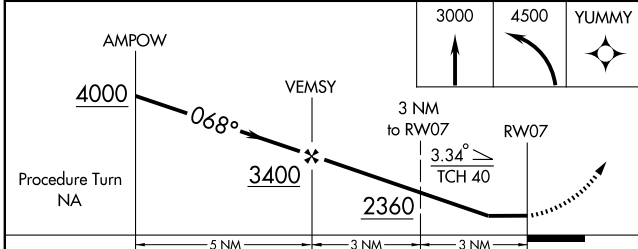
<p>TRI CITY APP CON ★</p> <p><b>119.25 317.5</b></p>	<p>UNICOM</p> <p><b>122.8 (CTAF)</b></p>
--	--



SE-1, 11 MAR 2010 to 08 APR 2010

SE-1, 11 MAR 2010 to 08 APR 2010

ELEV 1255



CATEGORY	A	B	C	D
S-7	2140-1¼	885 (900-1¼)	2140-2¾ 885 (900-2¾)	NA
CIRCLING	2180-1¼	925 (1000-1¼)	2180-2¾ 925 (1000-2¾)	NA
<b>TRI-CITIES RGNL ALTIMETER SETTING MINIMUMS</b>				
S-7	2220-1¼ 965 (1000-1¼)	2220-1½ 965 (1000-1½)	2220-3 965 (1000-3)	NA
CIRCLING	2260-1¼ 1005 (1100-1¼)	2260-1½ 1005 (1100-1½)	2260-3 1005 (1100-3)	NA

MIRL Rwy 7-25  
REIL Rwy 7 and 25