

NDB RWY 7

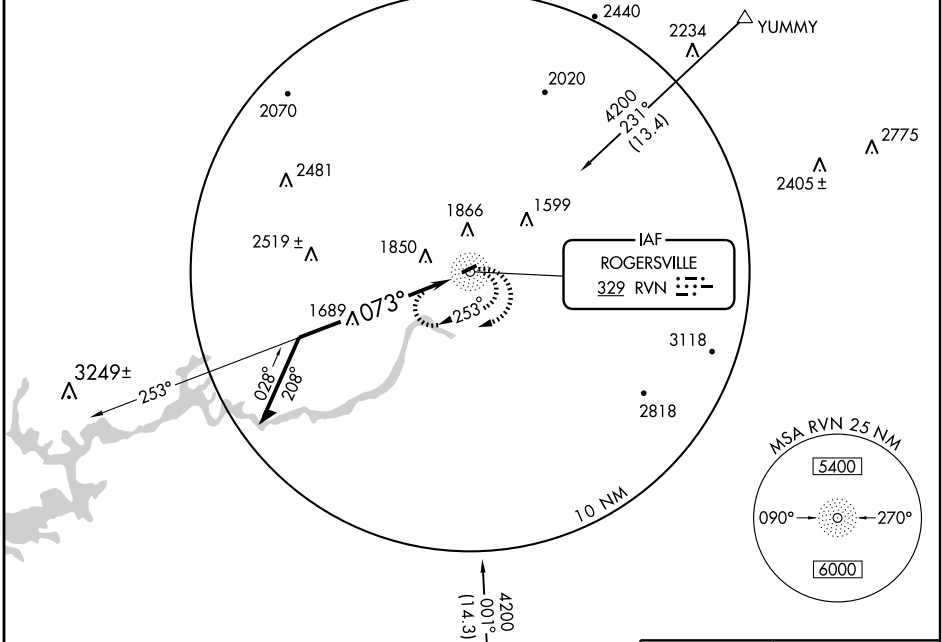
ROGERSVILLE/HAWKINS COUNTY (RVN)

NDB RVN 329	APP CRS 073°	Rwy Idg 3502
		TDZE 1255
		Apt Elev 1255

⚠ Obtain local altimeter setting on CTAF, if not received use Tri-Cities Rgnl altimeter setting.
⚠ NA Procedure not authorized at night.

MISSED APPROACH: Climbing right turn to 4200 in RVN NDB holding pattern.

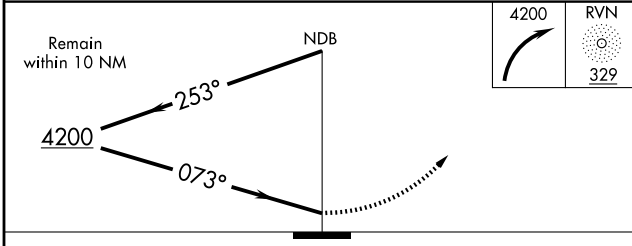
TRI CITY APP CON ★ **119.25 317.5** UNICOM **122.8 (CTAF)**



SE-1, 11 MAR 2010 to 08 APR 2010

SE-1, 11 MAR 2010 to 08 APR 2010

ELEV 1255



CATEGORY	A	B	C	D
S-7	2880-1¼ 1625 (1700-1¼)	2880-1½ 1625 (1700-1½)	2880-3 1625 (1700-3)	NA
CIRCLING	2880-1¼ 1625 (1700-1¼)	2880-1½ 1625 (1700-1½)	2880-3 1625 (1700-3)	NA
TRI-CITIES RGNL ALTIMETER SETTING MINIMUMS				
S-7	2980-1¼ 1725 (1800-1¼)	2980-1½ 1725 (1800-1½)	2980-3 1725 (1800-3)	NA
CIRCLING	2980-1¼ 1725 (1800-1¼)	2980-1½ 1725 (1800-1½)	2980-3 1725 (1800-3)	NA

