

FLEMINGSBURG, KENTUCKY

AL-6296 (FAA)

LOC RWY 25

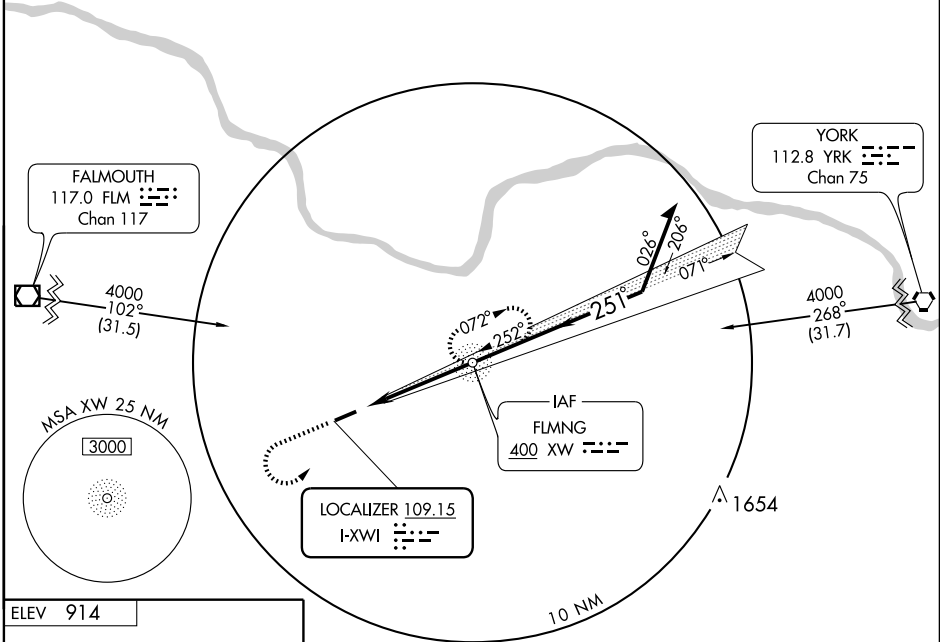
FLEMINGSBURG/FLEMING-MASON (F'GX)

LOC I-XWI 109.15	APP CRS 251°	Rwy Idg TDZE Apt Elev	5001 914 914
----------------------------	------------------------	-----------------------------	---

MISSED APPROACH: Climb to 2000 then climbing left turn to 3000 direct XW NDB and hold.

AWOS-3 118.125	INDIANAPOLIS CENTER 124.225 360.725	UNICOM 123.0(CTAF) 0
--------------------------	---	--------------------------------

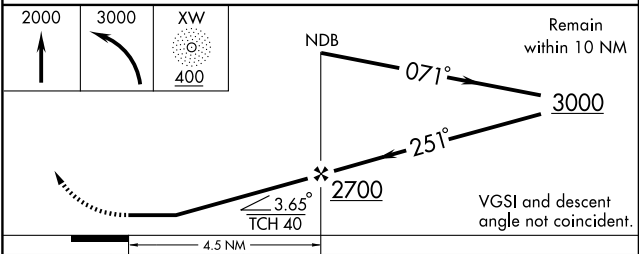
ADF REQUIRED



SE-1, 19 NOV 2009 to 17 DEC 2009

SE-1, 19 NOV 2009 to 17 DEC 2009

ELEV 914



MIRL Rwy 7-25
REIL Rwys 7 and 25

FAF to MAP 4.5 NM					
Knots	60	90	120	150	180
Min:Sec	4:30	3:00	2:15	1:48	1:30

CATEGORY	A	B	C	D
S-25	1320-1	406 (500-1)	1320-1¼	406 (500-1¼)
CIRCLING	1360-1 446 (500-1)	1380-1 466 (500-1)	1380-1½ 466 (500-1½)	1480-2 566 (600-2)

FLEMINGSBURG, KENTUCKY
Orig-B 09127

38°33'N-83°45'W

FLEMINGSBURG/FLEMING-MASON (F'GX)

LOC RWY 25