

WAAS CH 69212 W25A	APP CRS 252°	Rwy Idg TDZE Apt Elev	5001 913 913
--	------------------------	-----------------------------	---

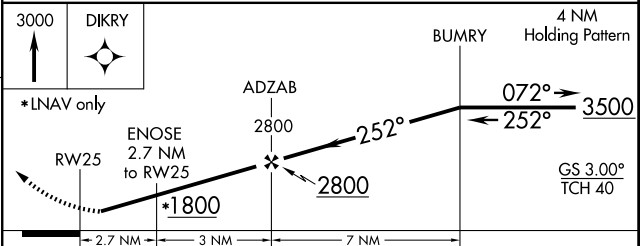
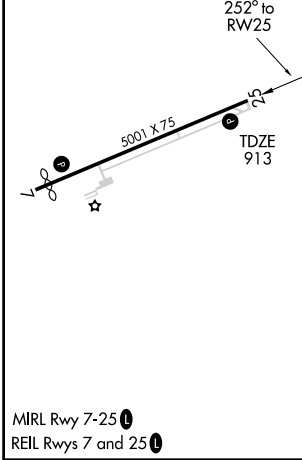
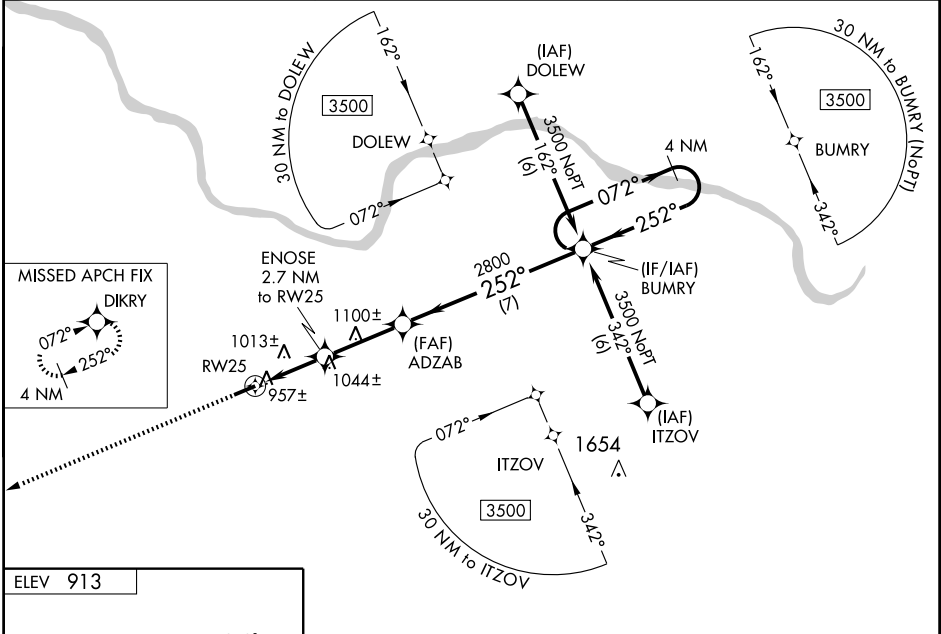
RNAV (GPS) RWY 25

FLEMINGSBURG/ FLEMING-MASON (F/GX)

Baro-VNAV NA when using Lexington altimeter setting. For uncompensated Baro-VNAV systems, LNAV/VNAV NA below -16°C (4°F) or above 47°C (116°F). DME/DME RNP-0.3 NA. Visibility reduction by helicopters NA. When local altimeter setting not received, use Lexington altimeter setting and increase LPV DA to 1290, LNAV/VNAV DA to 1344 feet. Increase LPV visibility ½ mile, LNAV/VNAV visibility ½ mile. Increase all MDA 140 feet. Increase LNAV Cat. C visibility ½ mile, Cat. D ¼ mile. Increase Circling Cats. C/D visibility ¼ mile.

MISSED APPROACH:
Climb to 3000 direct
DIKRY and hold.

AWOS-3 118.125	INDIANAPOLIS CENTER 124.225 360.725	UNICOM 123.0(CTAF)
--------------------------	---	------------------------------



CATEGORY	A	B	C	D
LPV DA		1163-1	250 (300-1)	
LNAV/VNAV DA		1217-1	304 (400-1)	
LNAV MDA	1280-1	367 (400-1)		1280-1 ¼ 367 (400-1 ¼)
CIRCLING	1360-1 447 (500-1)	1380-1 467 (500-1)	1380-1 ½ 467 (500-1 ½)	1480-2 567 (600-2)

SE-1, 19 NOV 2009 to 17 DEC 2009

SE-1, 19 NOV 2009 to 17 DEC 2009