

WAAS CH 56312 W07A	APP CRS 072°	Rwy Idg TDZE Apt Elev	4702 913 913
--	------------------------	-----------------------------	---

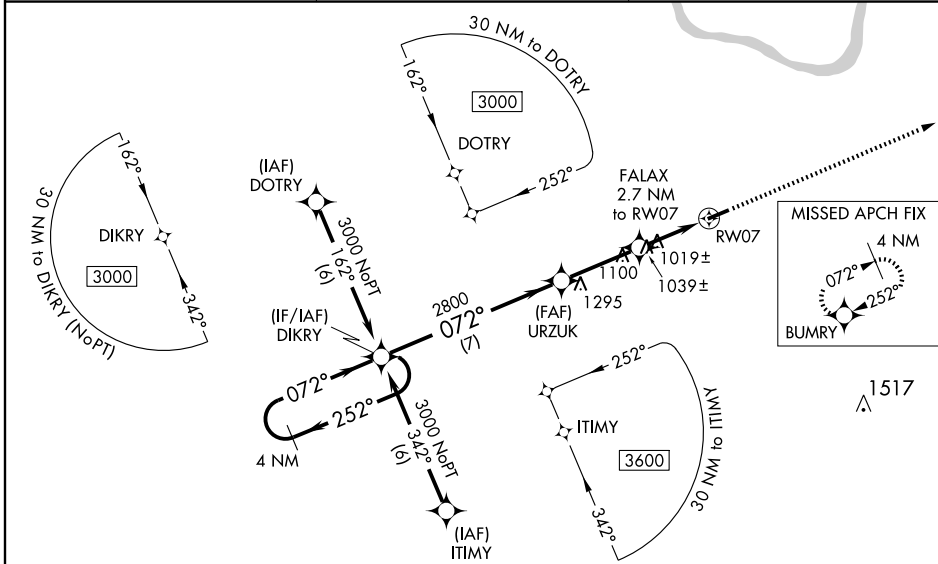
RNAV (GPS) RWY 7

FLEMINGSBURG/FLEMING-MASON (F/GX)

Baro-VNAV NA when using Lexington altimeter setting. For uncompensated Baro-VNAV systems, LNAV/VNAV NA below -16°C (4°F) or above 47°C (116°F). DME/DME RNP-0.3 NA. Visibility reduction by helicopters NA. When local altimeter setting not received, use Lexington altimeter setting and increase LPV DA to 1290, LNAV/VNAV DA to 1383 feet. Increase LPV visibility ¼ mile, LNAV/VNAV visibility ½ mile. Increase all MDA 140 feet. Increase LNAV Cat. C visibility ¼ mile, Cat. D ½ mile. Increase Circling Cats. C/D visibility ¼ mile.

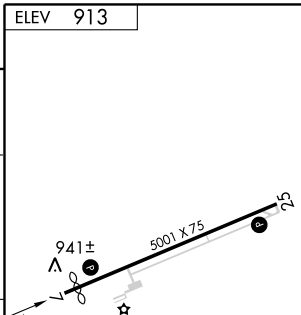
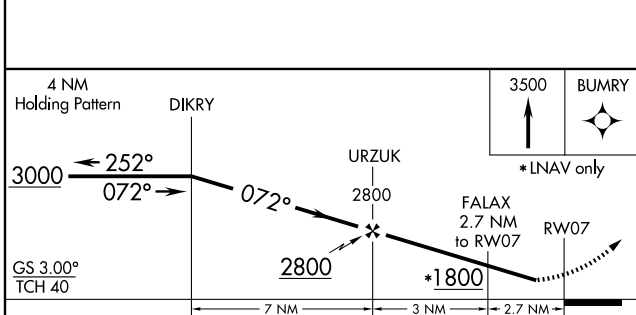
MISSED APPROACH:
Climb to 3500 direct BUMRY and hold.

AWOS-3 118.125	INDIANAPOLIS CENTER 124.225 360.725	UNICOM 123.0(CTAF) 0
--------------------------	---	--------------------------------



SE-1, 19 NOV 2009 to 17 DEC 2009

SE-1, 19 NOV 2009 to 17 DEC 2009



CATEGORY	A	B	C	D
LPV DA	1163-1		250 (300-1)	
LNAV/VNAV DA	1256-1¼		343 (400-1¼)	
LNAV MDA	1320-1 407 (500-1)		1320-1¼ 407 (500-1¼)	
CIRCLING	1360-1 447 (500-1)	1380-1 467 (500-1)	1380-1½ 467 (500-1½)	1480-2 567 (600-2)

ELEV 913

MIRL Rwy 7-25 0
REIL Rwy 7 and 25 0