

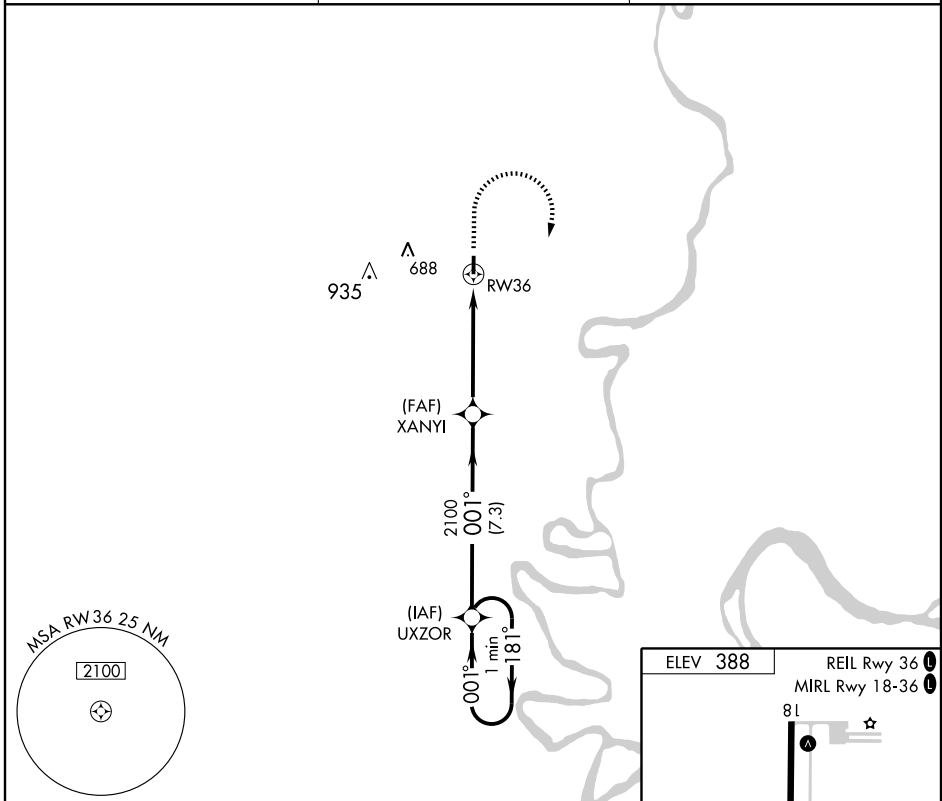
GPS RWY 36

CARMI MUNI (CUL)

APP CRS	Rwy Idg	4001
001°	TDZE	384
	Apt Elev	388

NA If local altimeter setting not received, use Evansville altimeter setting. MISSED APPROACH: Climb to 1500 then climbing right turn to 2100 direct UXZOR WP and hold.

AWOS-3 118,425	EVANSVILLE APP CON ★ 127,35 267.9	UNICOM 122.8 (CTAF) 0
--------------------------	---	---------------------------------



EC-3, 19 NOV 2009 to 17 DEC 2009

EC-3, 19 NOV 2009 to 17 DEC 2009

