

CARMI, ILLINOIS

AL-6299 (FAA)

NDB RWY 36

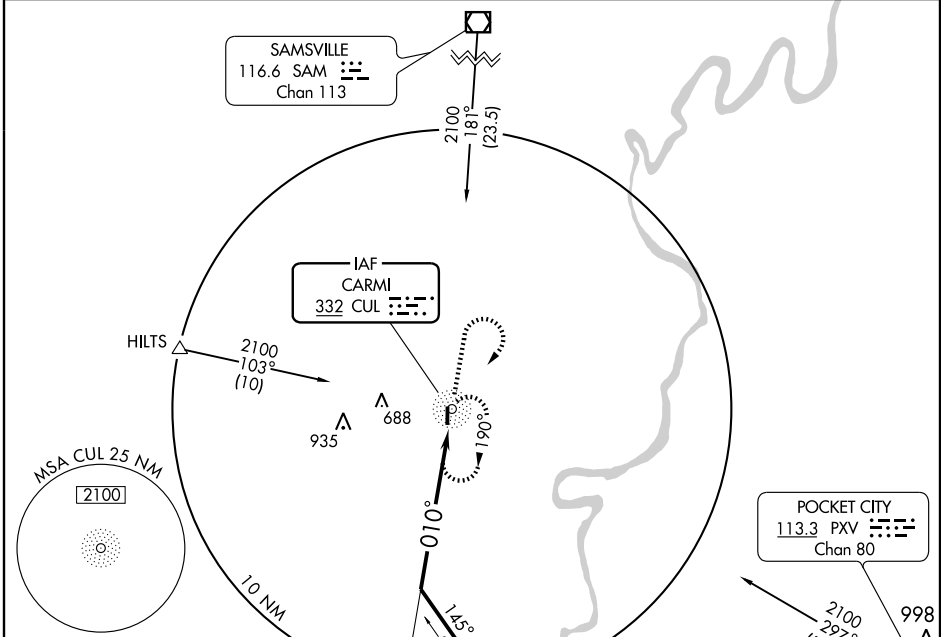
CARMI MUNI (CUL)

NDB CUL	APP CRS	Rwy Idg	4001
332	010°	TDZE	384
		Apt Elev	388

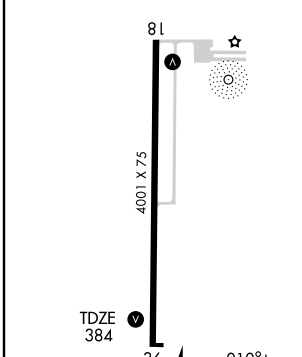
NA If local altimeter setting not received, use Evansville altimeter setting.

MISSED APPROACH: Climb to 1500 then climbing right turn to 2100 direct CUL NDB and hold.

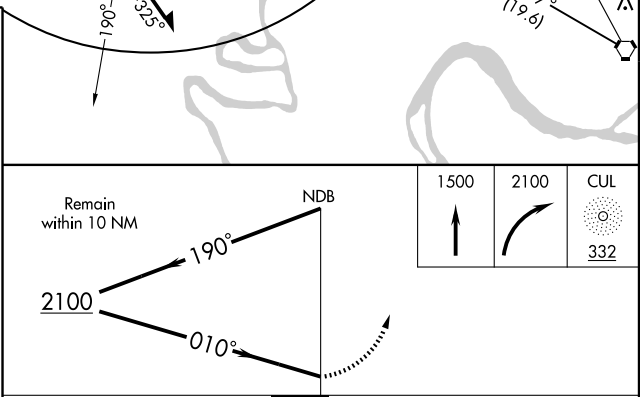
AWOS-3 118.425	EVANSVILLE APP CON ★ 127.35 267.9	UNICOM 122.8 (CTAF) 0
--------------------------	---	---------------------------------



ELEV 388



REIL Rwy 36 (L)
MIRL Rwy 18-36 (L)



	A	B	C	D
S-36	1080-1	696 (700-1)	1080-2 696 (700-2)	NA
CIRCLING	1080-1	692 (700-1)	1080-2 692 (700-2)	NA

CARMI, ILLINOIS
Amdt 1A 07186

38°05'N-88°07'W

CARMI MUNI (CUL) NDB RWY 36

EC-3, 11 MAR 2010 to 08 APR 2010

EC-3, 11 MAR 2010 to 08 APR 2010