

CARMI, ILLINOIS

AL-6299 (FAA)

NDB RWY 36

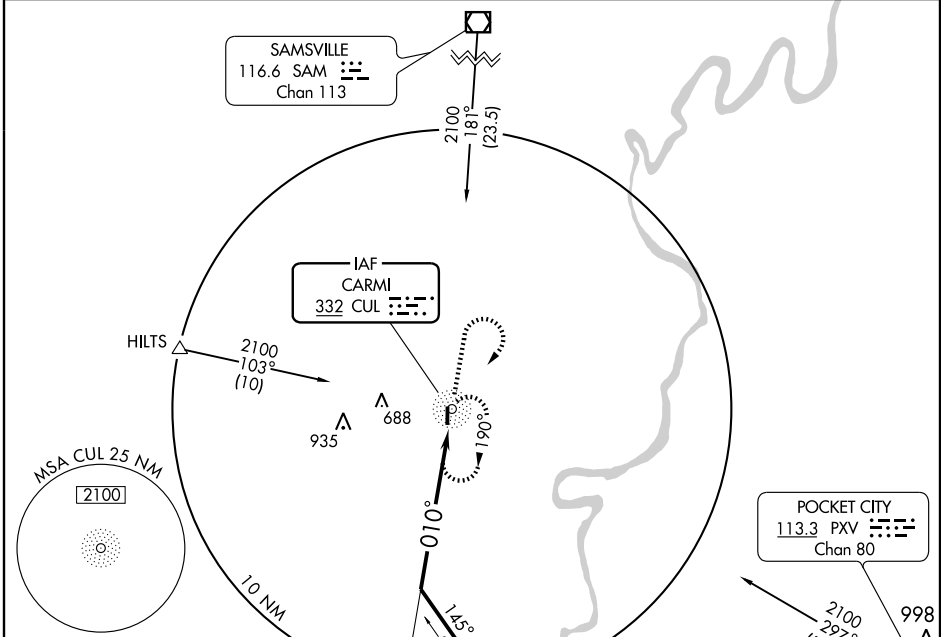
CARMI MUNI (CUL)

NDB CUL	APP CRS	Rwy Idg	4001
332	010°	TDZE	384
		Apt Elev	388

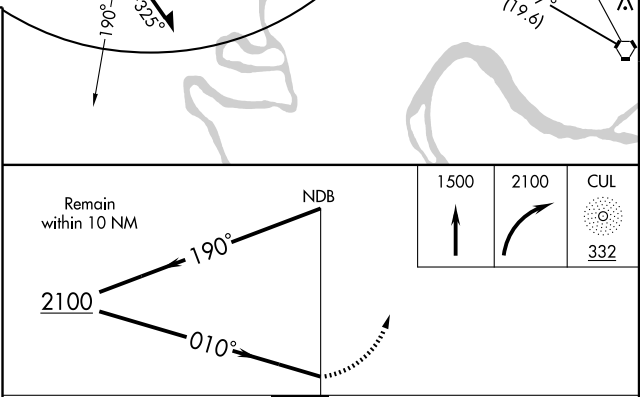
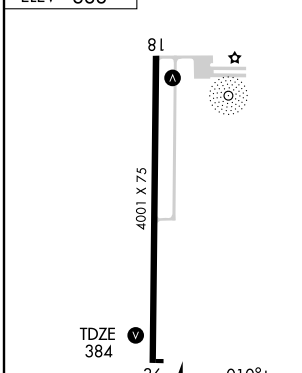
NA If local altimeter setting not received, use Evansville altimeter setting.

MISSED APPROACH: Climb to 1500 then climbing right turn to 2100 direct CUL NDB and hold.

AWOS-3 118.425	EVANSVILLE APP CON ★ 127.35 267.9	UNICOM 122.8 (CTAF) 0
--------------------------	---	---------------------------------



ELEV 388



Knots	60	90	120	150	180
Min:Sec					

CARMI, ILLINOIS
Amdt 1A 07186

38°05'N-88°07'W

CARMI MUNI (CUL) NDB RWY 36

EC-3, 19 NOV 2009 to 17 DEC 2009

EC-3, 19 NOV 2009 to 17 DEC 2009