

VOR/DME BPT <b>114.5</b> Chan <b>92</b>	APP CRS <b>229°</b>	Rwy Idg TDZE <b>13</b> Apt Elev <b>13</b>	<b>5500</b>
---	------------------------	---	-------------

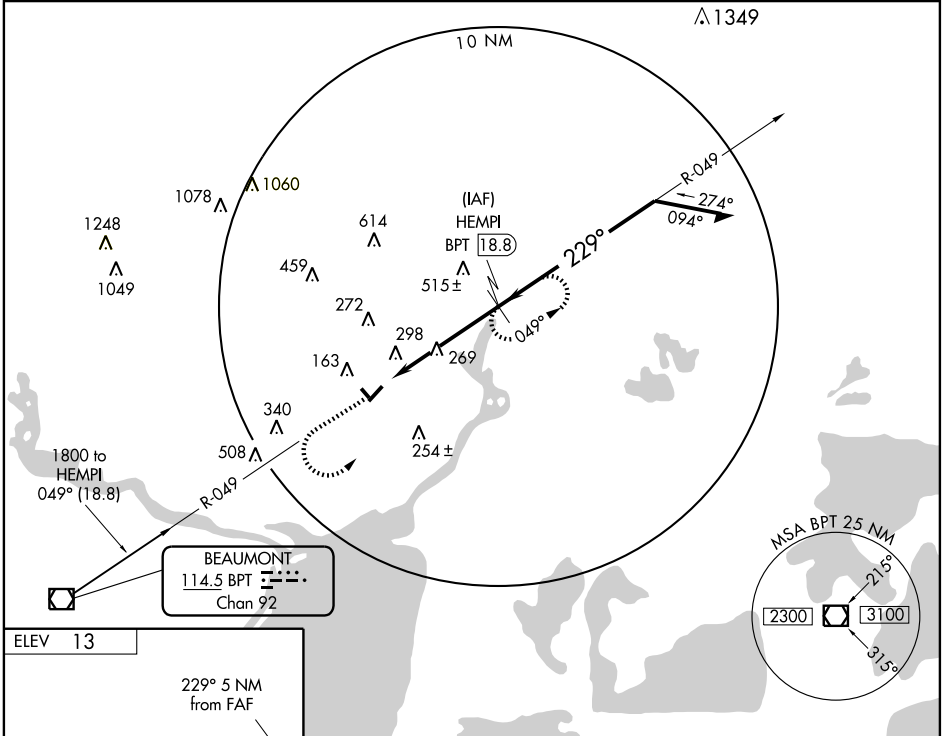
# VOR/DME RWY 22

ORANGE COUNTY (OR.G)

▼ Visibility reduction by helicopters NA. Circling NA to Rwy 13/31.  
 ▲ VDP NA when using Southeast Texas Rgnl altimeter setting.  
 ▲ When local altimeter setting not received, use Southeast Texas Rgnl altimeter setting and increase all MDA 40 feet and increase S-22 and Circling Cat C visibility ¼ mile.

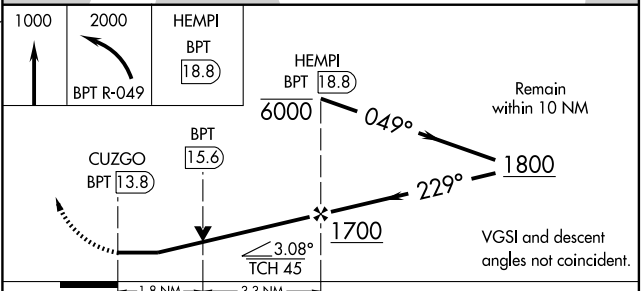
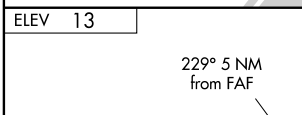
MISSED APPROACH: Climb to 1000 then climbing left turn to 2000 via BPT R-049 to HEMPI/18.8 DME and hold.

AWOS-3 <b>118.975</b>	HOUSTON APP CON <b>121.3 377.1</b>	UNICOM <b>122.8 (CTAF) 0</b>
--------------------------	---------------------------------------	---------------------------------



SC-5, 11 MAR 2010 to 08 APR 2010

SC-5, 11 MAR 2010 to 08 APR 2010



ELEV 13
MIRL Rwy 4-22 0

CATEGORY	A	B	C	D
S-22	600-1	587 (600-1)	600-1½ 587 (600-1½)	NA
CIRCLING	660-1	647 (700-1)	660-1¾ 647 (700-1¾)	NA