

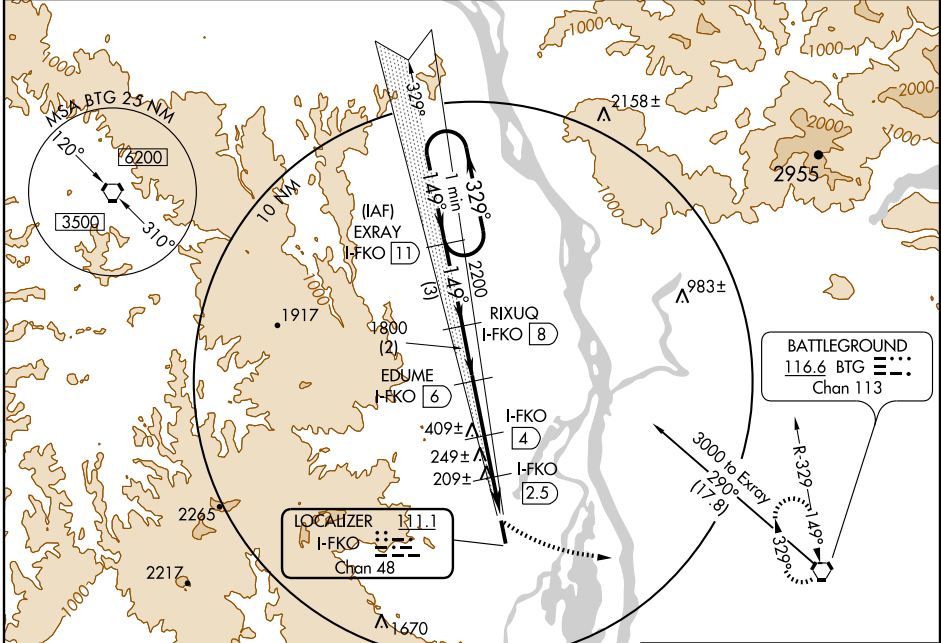
# LOC/DME RWY 15

SCAPPOOSE INDUSTRIAL AIRPARK (SPB)

LOC/DME I-FKO <b>111.1</b> Chan <b>48</b>	APP CRS <b>149°</b>	Rwy Idg <b>5100</b> TDZE <b>55</b> Apt Elev <b>55</b>
---	------------------------	---

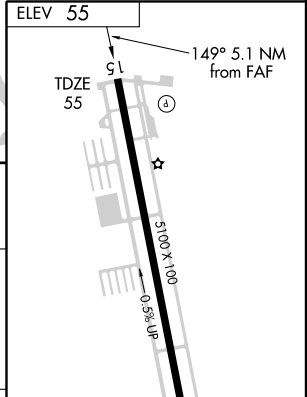
▼ Circling not authorized west of Rwy 15-33.
MISSED APPROACH: Climbing left turn to 5000 direct BTG VORTAC and hold.

ASOS <b>135.875</b>	PORTLAND APP CON <b>124.35 299.2</b>	CINC DEL <b>121.65</b>	UNICOM <b>122.8 (CTAF)</b>
------------------------	---	---------------------------	-------------------------------



NW-1, 19 NOV 2009 to 17 DEC 2009

NW-1, 19 NOV 2009 to 17 DEC 2009



One Minute Holding Pattern	EXRAY I-FKO (11)	RIXUQ I-FKO (8)	EDUME I-FKO (6)	I-FKO (4)	I-FKO (2.5)	I-FKO (0.9)	5000 BTG 116.6
2800	2200	1800	1100	600			
	3 NM	2 NM	2 NM	1.5 NM	1.6 NM		

CATEGORY	A	B	C	D
S-15	460-1	405 (500-1)	460-1¼	405 (500-1¼)
CIRCLING	480-1 425 (500-1)	520-1 465 (500-1)	520-1½ 465 (500-1½)	620-2 565 (600-2)

Knots	60	90	120	150	180
Min:Sec					