

POTEAU, OKLAHOMA

AL-6321 (FAA)

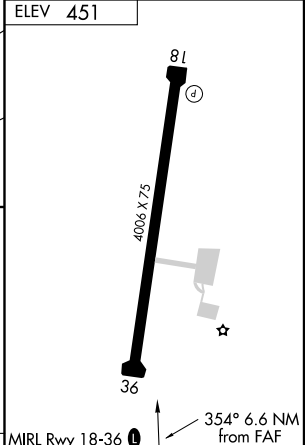
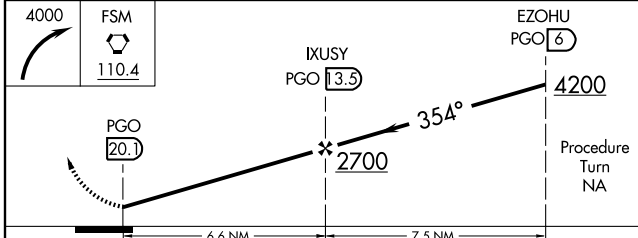
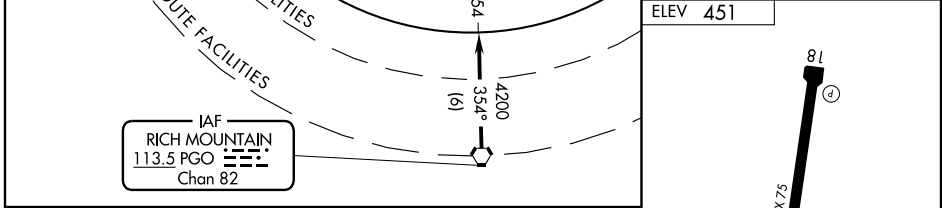
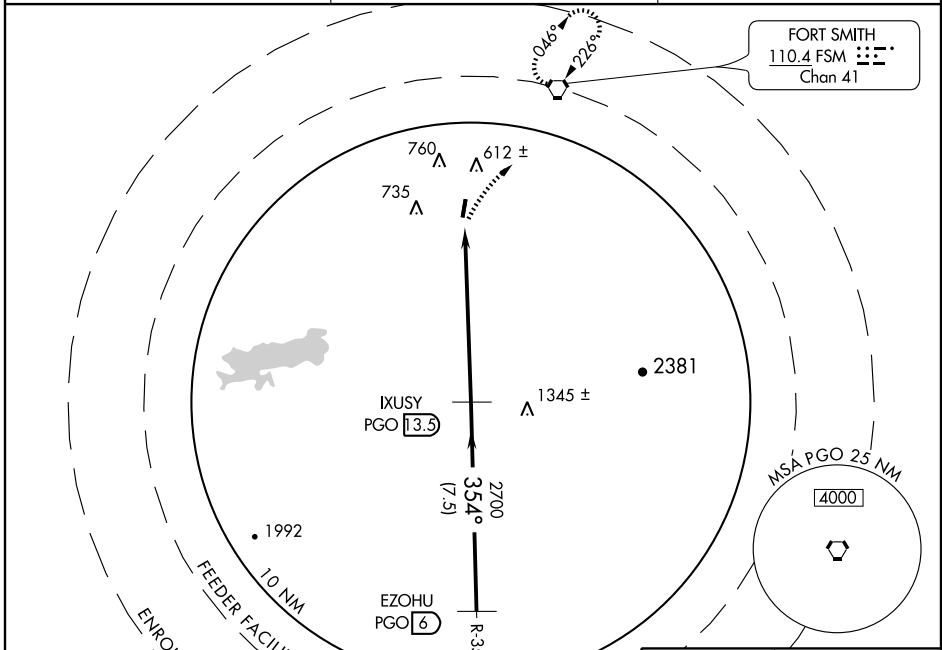
VORTAC PGO 113.5 Chan 82	APP CRS 354°	Rwy Idg TDZE Apt Elev	N/A N/A 451
----------------------------------------------	------------------------	-----------------------------	----------------------------------------

VOR/DME-A

POTEAU/ROBERT S. KERR (R.K.R)

▼ MISSED APPROACH: Climbing right turn to 4000 direct FSM VORTAC and hold.

AWOS-3 120.625	RAZORBACK APP CON ★ 120.9 353.575	UNICOM 122.8 (CTAF) 0
--------------------------	---------------------------------------------	---------------------------------



CATEGORY	A	B	C	D	Knots	60	90	120	150	180
CIRCLING	1020-1 569 (600-1)	1020-1 ¼ 569 (600-1 ¼)	1100-1 ¾ 649 (700-1 ¾)	NA	Min:Sec					

POTEAU, OKLAHOMA
Orig 05132

35°01'N-94°37'W

POTEAU/ROBERT S. KERR (R.K.R)
VOR/DME-A

SC-1, 19 NOV 2009 to 17 DEC 2009

SC-1, 19 NOV 2009 to 17 DEC 2009