

RNAV (GPS) RWY 18

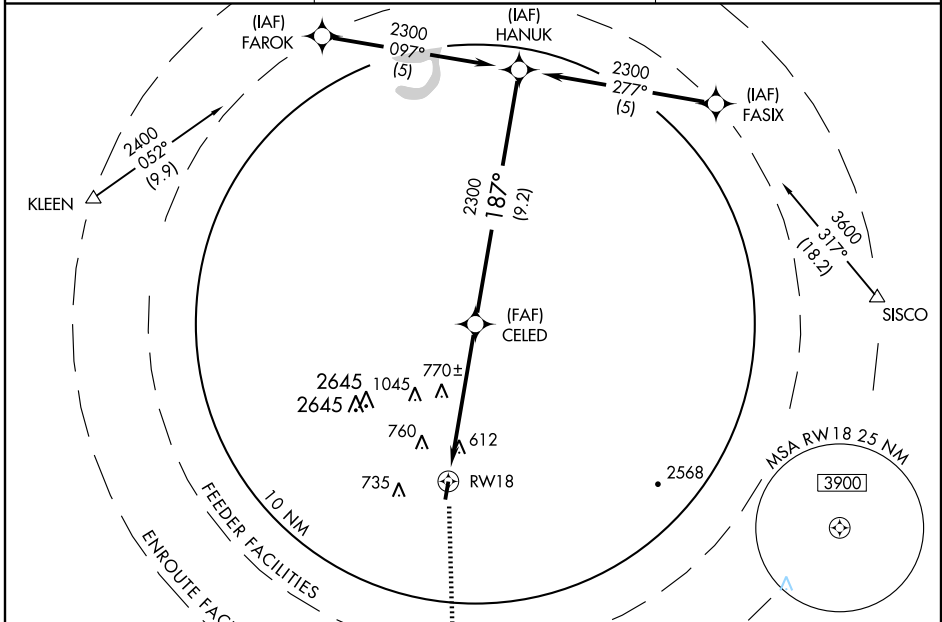
POTEAU/ROBERT S. KERR (R.K.R.)

APP CRS 187°	Rwy Idg 4006
	TDZE 451
	Apt Elev 451

▽ If local altimeter setting not received, use Fort Smith Rgnl altimeter setting and increase all MDAs 60 feet.
▲ NA VDP NA with Fort Smith Rgnl altimeter setting. GPS or RNP-0.3 required. DME/DME RNP-0.3 NA.

MISSED APPROACH: Climb to 4200 direct PGO VORTAC and hold.

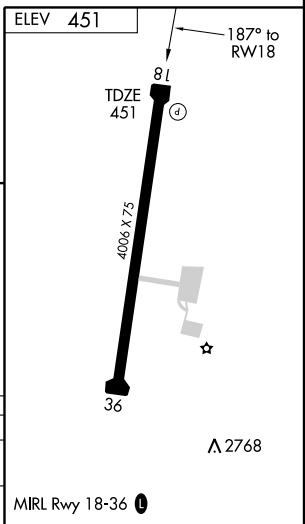
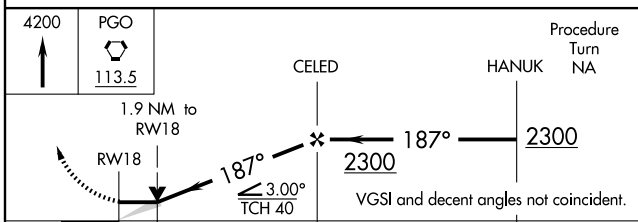
AWOS-3 120.625	RAZORBACK APP CON ★ 120.9 353.575	UNICOM 122.8 (CTAF) ①
--------------------------	---	---------------------------------



Procedure NA for arrival at KLEEN via V272 southwest.

Procedure NA for arrival at SISCO via V289 southbound.

RICH MOUNTAIN PGO 6 NM



CATEGORY	A	B	C	D
RNAV MDA	1020-1	569 (600-1)	1020-1½ 569 (600-1½)	NA
CIRCLING	1020-1	569 (600-1)	1040-1½ 589 (600-1½)	NA

MIRL Rwy 18-36 ①

SC-1, 19 NOV 2009 to 17 DEC 2009

SC-1, 19 NOV 2009 to 17 DEC 2009