

RNAV (GPS) RWY 36

POTEAU/ROBERT S. KERR (R.K.R.)

| | |
|------------------------|------------------------|
| APP CRS 007° | Rwy Idg 4006 |
| | TDZE 451 |
| | Apt Elev 451 |

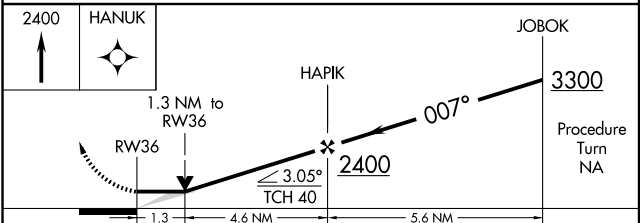
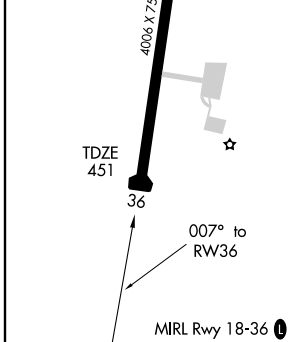
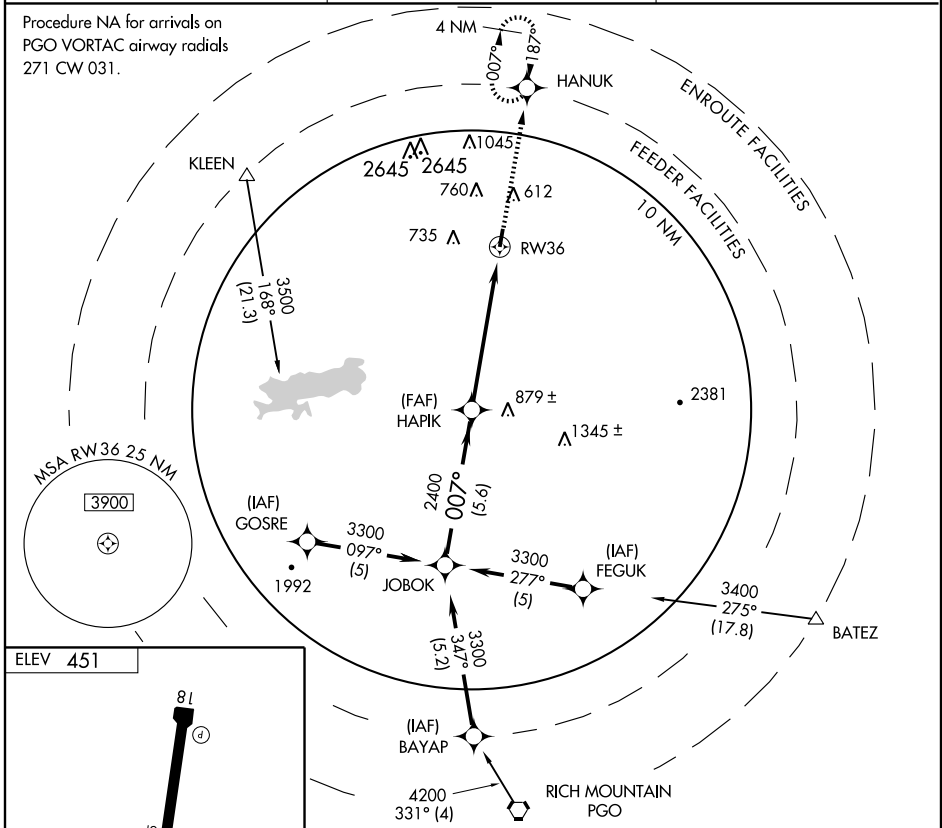
▼ If local altimeter setting not received, use Fort Smith Rgnl altimeter setting and increase all MDAs 60 feet.
▲ NA VDP NA with Fort Smith Rgnl altimeter setting. GPS or RNP-0.3 required. DME/DME RNP-0.3 NA.

MISSED APPROACH: Climb to 2400 direct HANUK WP and hold.

AWOS-3
120.625

RAZORBACK APP CON *
120.9 353.575

UNICOM
122.8 (CTAF) **1**



| CATEGORY | A | B | C | D |
|----------|-------|-------------|---------------------------|----|
| LNAV MDA | 920-1 | 469 (500-1) | 920-1 ¼ 469 (500-1 ¼) | NA |
| CIRCLING | 920-1 | 469 (500-1) | 1040-1 ½ 589 (600-1 ½) | NA |

SC-1, 19 NOV 2009 to 17 DEC 2009

SC-1, 19 NOV 2009 to 17 DEC 2009