

ROCKWALL, TEXAS

AL-6323 (FAA)

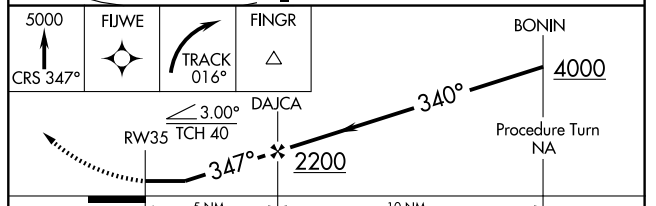
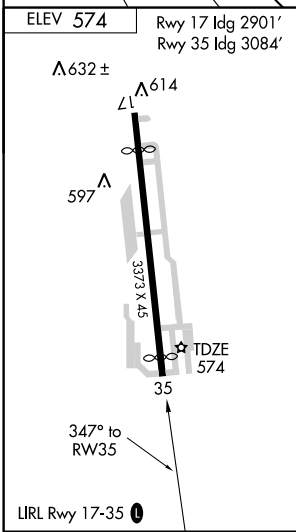
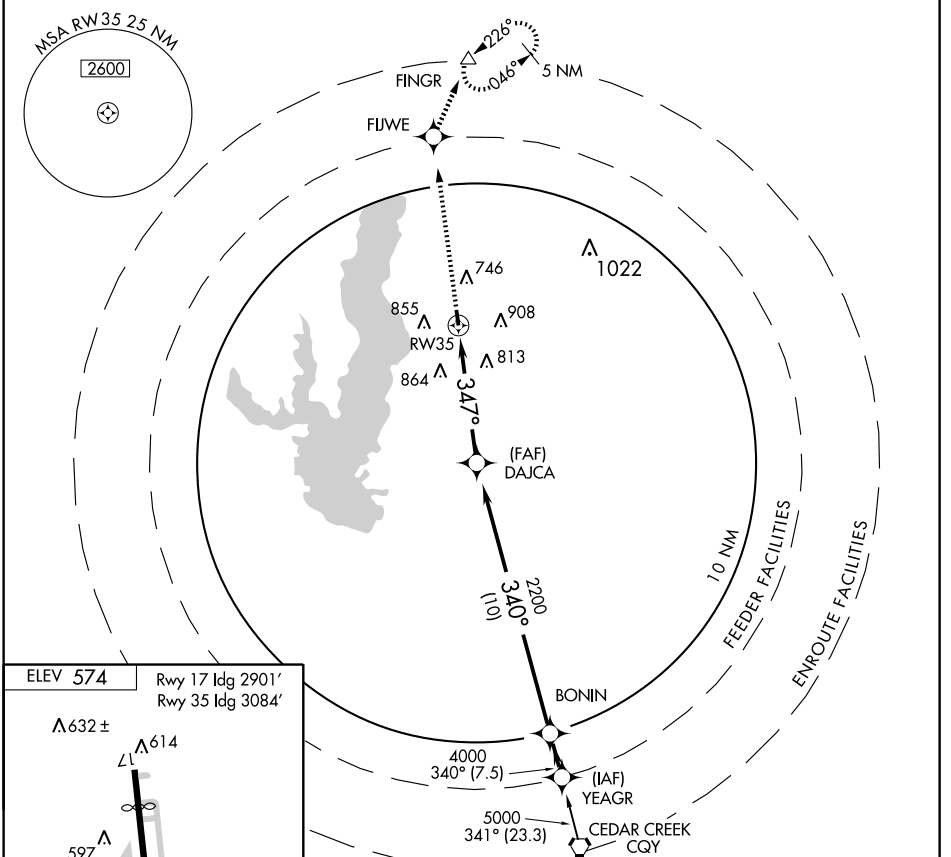
# RNAV (GPS) RWY 35

ROCKWALL MUNI (F46)

APP CRS **347°**  
 Rwy ldg **3084**  
 TDZE **574**  
 Apt Elev **574**

**▽** DME/DME RNP-0.3 NA.  
**△** NA Use Dallas-Love Field altimeter setting. MISSED APPROACH: Climb to 5000 via 347° course to FIJWE and right turn via 016° track to FINGR and hold.

REGIONAL APP CON **124.3 282.275** UNICOM **122.8 (CTAF) 0**



| CATEGORY | A      | B           | C                       | D  |
|----------|--------|-------------|-------------------------|----|
| LNAV MDA | 1200-1 | 626 (700-1) | 1200-1¾<br>626 (700-1¾) | NA |
| CIRCLING | 1220-1 | 646 (700-1) | 1320-2¼<br>746 (800-2¼) | NA |

ROCKWALL, TEXAS  
 Orig-A 06271

32°56'N-96°26'W

# RNAV (GPS) RWY 35

SC-2, 19 NOV 2009 to 17 DEC 2009

SC-2, 19 NOV 2009 to 17 DEC 2009