

ROCKWALL, TEXAS

AL-6323 (FAA)

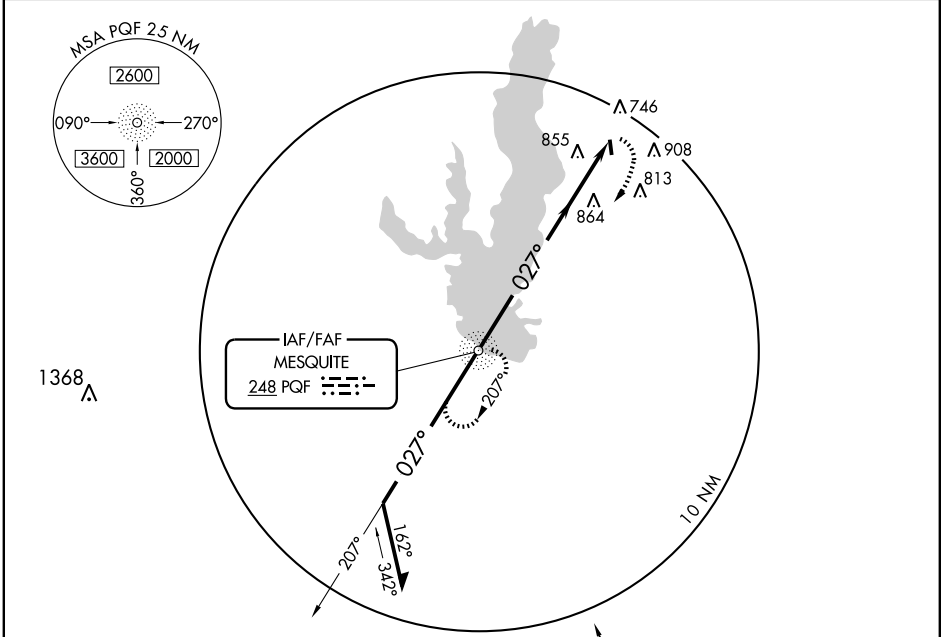
NDB-A

ROCKWALL MUNI (F46)

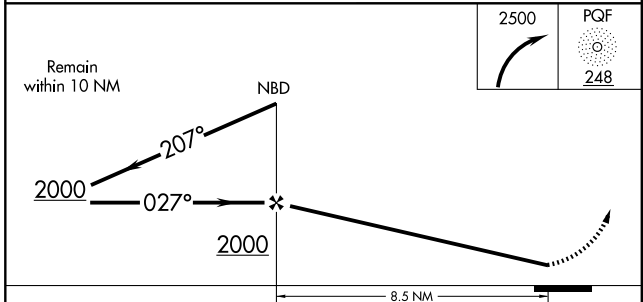
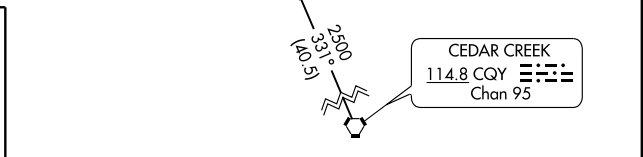
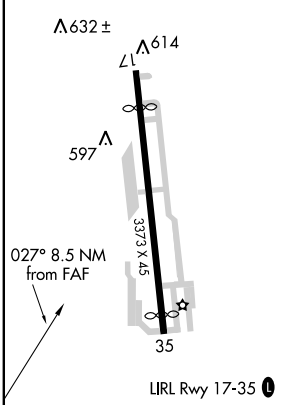
NDB PQF 248	APP CRS 027°	Rwy Idg TDZE Apt Elev	N/A N/A 574
-----------------------	------------------------	-----------------------------	--

▼ Use Dallas-Love Field altimeter setting.
▲ NA MISSED APPROACH: Climbing right turn to 2500 direct PQF NDB and hold.

REGIONAL APP CON **124.3 282.275** UNICOM **122.8 (CTAF) 0**



ELEV 574 Rwy 17 Idg 2901'
Rwy 35 Idg 3084'



FAF to MAP 8.5 NM						
Knots	60	90	120	150	180	
Min:Sec	8:30	5:40	4:15	3:24	2:50	
CATEGORY	A		B		C	D
CIRCLING	1400-1 826 (900-1)		1400-1½ 826 (900-1½)		1400-2½ 826 (900-2½)	NA

ROCKWALL, TEXAS

Orig-B 06187

32°56'N-96°26'W

ROCKWALL MUNI (F46)

NDB-A

SC-2, 19 NOV 2009 to 17 DEC 2009

SC-2, 19 NOV 2009 to 17 DEC 2009