

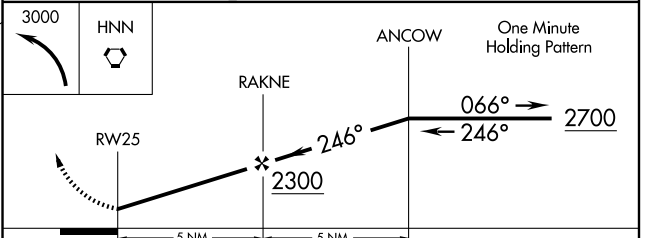
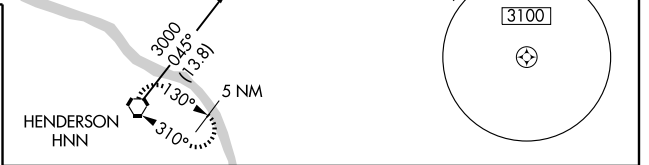
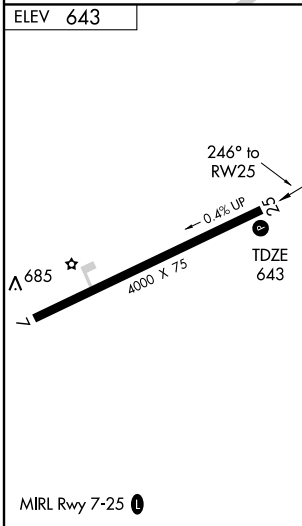
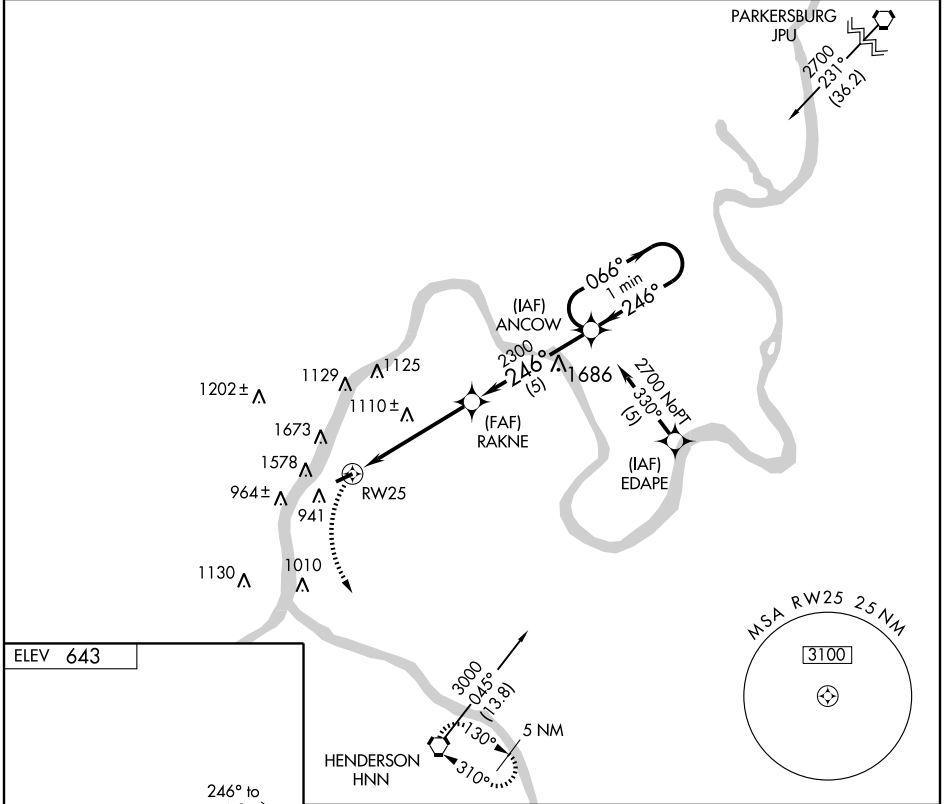
# GPS RWY 25

POINT PLEASANT / MASON COUNTY (3I2)

APP CRS <b>246°</b>	Rwy Idg TDZE Apt Elev	<b>4000</b> <b>643</b> <b>643</b>
------------------------	-----------------------------	---

<p>▼ ▲ NA</p> <p>Circling NA northwest of Rwy 7-25.</p>	<p>MISSED APPROACH: Climbing left turn to 3000 direct HNN VORTAC and hold.</p>
---	--

<p>AWOS-3 <b>119.675</b></p>	<p>HUNTINGTON APP CON <b>128.4 270.1</b></p>	<p>UNICOM <b>122.8</b> (CTAF) <b>0</b></p>
----------------------------------	--	--



CATEGORY	A	B	C	D
S-25	1360-1	717 (800-1)	1360-2 717 (800-2)	1360-2 ¼ 717 (800-2 ¼)
CIRCLING	1360-1	717 (800-1)	1360-2 717 (800-2)	1360-2 ¼ 717 (800-2 ¼)

# GPS RWY 25

NE-4, 19 NOV 2009 to 17 DEC 2009

NE-4, 19 NOV 2009 to 17 DEC 2009