

ILS or LOC RWY 4

SPARTA/UPPER CUMBERLAND RGNL (SRB)

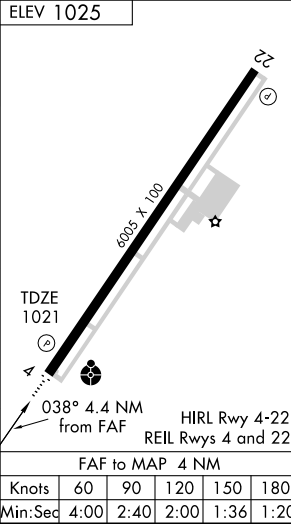
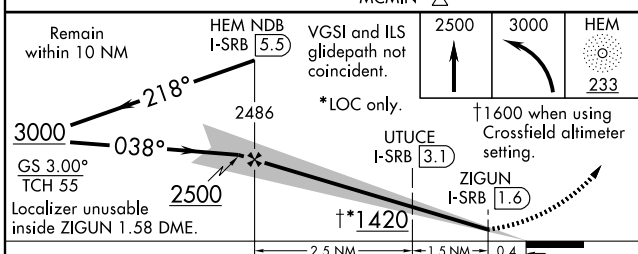
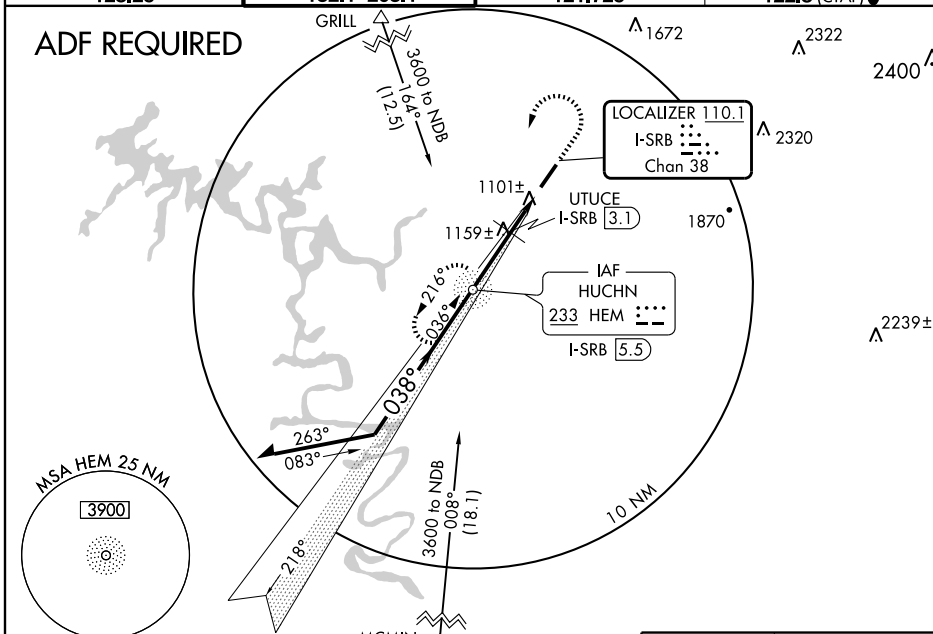
LOC/DME I-SRB <b>110.1</b> Chan <b>38</b>	APP CRS <b>038°</b>	Rwy Idg TDZE <b>6005</b> <b>1021</b> Apt Elev <b>1025</b>
---	------------------------	--



MISSED APPROACH: Climb to 2500 then climbing left turn to 3000 direct HEM NDB and hold.

ADF REQUIRED. When local altimeter setting not received, use Crossfield altimeter setting and increase DA to 1393 and S-ILS 4 all Cats. visibility 1/2 mile. Increase all MDA 180 feet and S-LOC 4 Cat. C visibility 3/4 mile, Cat. D 1/2 mile. Inoperative table does not apply to UTUCE FIX Cat. C minimums when using Crossfield altimeter setting.

AWOS-3 <b>128.25</b>	MEMPHIS CENTER <b>132.1 263.1</b>	GCO <b>121.725</b>	UNICOM <b>122.8</b> (CTAF) <b>0</b>
-------------------------	--------------------------------------	-----------------------	--



CATEGORY	A	B	C	D
S-ILS 4		1221-3/4	200 (200-3/4)	
S-LOC 4		1420-3/4	399 (400-3/4)	1420-1/4 399 (400-1/4)
CIRCLING	1480-1	455 (500-1)	1480-1/2 455 (500-1/2)	1580-2 555 (600-2)
UTUCE FIX MINIMUMS				
S-LOC 4		1360-3/4	339 (400-3/4)	1360-1/4 339 (400-1/4)
CIRCLING	1480-1	455 (500-1)	1480-1/2 455 (500-1/2)	1580-2 555 (600-2)

Knots	60	90	120	150	180
Min:Sec	4:00	2:40	2:00	1:36	1:20

SE-1, 19 NOV 2009 to 17 DEC 2009

SE-1, 19 NOV 2009 to 17 DEC 2009