

WAAS CH 82311 W22A	APP CRS 218°	Rwy Idg TDZE Apt Elev	6005 1025 1025
--	------------------------	-----------------------------	---

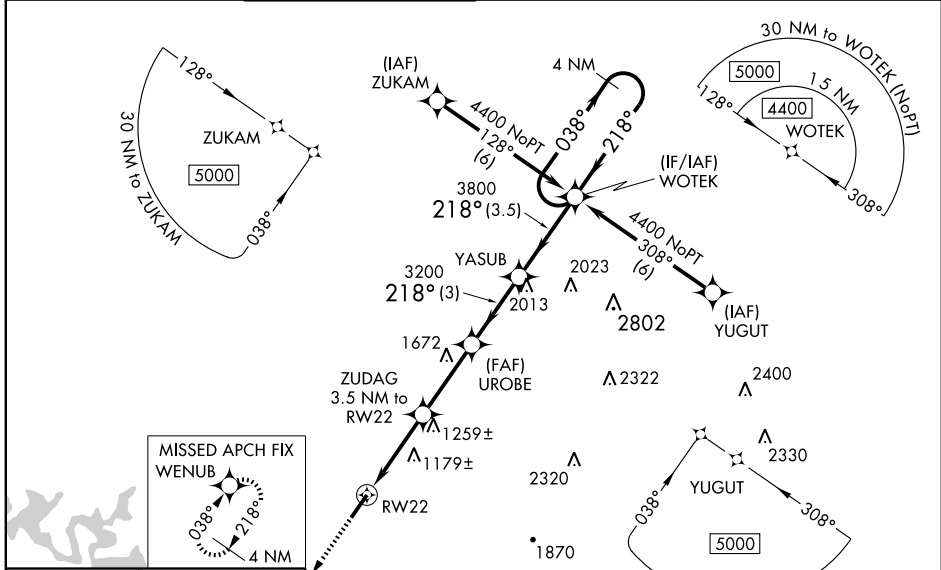
RNAV (GPS) RWY 22

SPARTA / UPPER CUMBERLAND RGNL (SR.B)

Baro-VNAV NA when using Crossville altimeter setting. For uncompensated Baro-VNAV systems, LNAV/VNAV NA below -17° C (2° F) or above 47° C (116° F). DME/DME RNP-0.3 NA. When local altimeter setting not received, use Crossville altimeter setting and increase LPV DA to 1447, LNAV/VNAV DA to 1633. Increase LPV and LNAV/VNAV visibility ¾ mile. Increase all MDA 180 feet and LNAV Cat. C visibility ¼ mile, Cat. D ½ mile. Increase Circling Cat. C/D visibility ¼ mile. VDP NA when using Crossville altimeter setting.

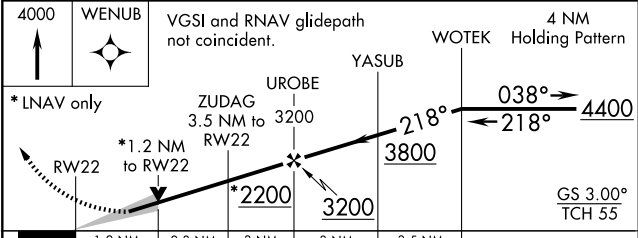
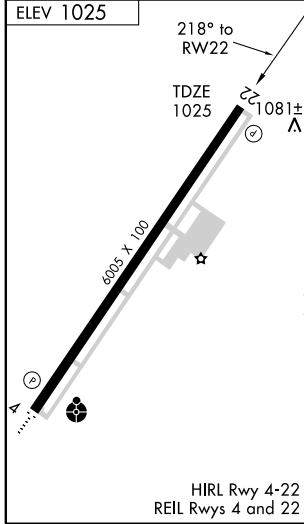
MISSED APPROACH:
Climb to 4000 direct
WENUB and hold.

AWOS-3 128.25	MEMPHIS CENTER 132.1 263.1	GCO 121.725	UNICOM 122.8 (CTAF) 0
-------------------------	--------------------------------------	-----------------------	---------------------------------



SE-1, 11 MAR 2010 to 08 APR 2010

SE-1, 11 MAR 2010 to 08 APR 2010



CATEGORY	A	B	C	D
LPV DA		1275-¾	250 (300-¾)	
LNAV/VNAV DA		1461-1½	436 (500-1½)	
LNAV MDA	1440-1	415 (500-1)	1440-1¼	415 (500-1¼)
CIRCLING	1480-1	455 (500-1)	1480-1½	1580-2
			455 (500-1½)	555 (600-2)