

RNAV (GPS) RWY 17

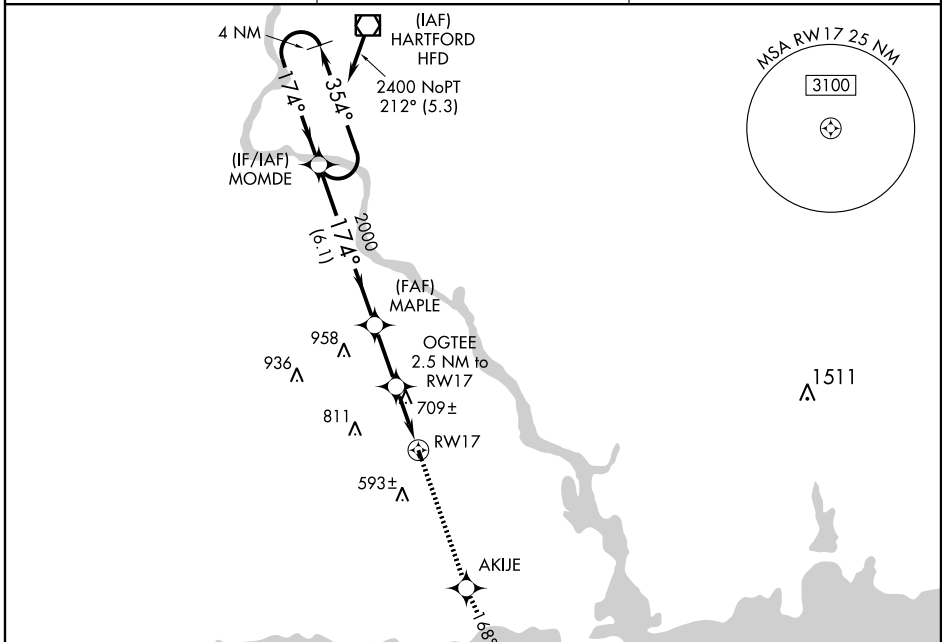
CHESTER (SNC)

| | | |
|-------------|----------|-------------|
| APP CRS | Rwy Idg | 2007 |
| 174° | TDZE | 416 |
| | Apt Elev | 416 |

▲ DME/DME RNP-0.3 NA. Procedure NA at night except by prior arrangement for runway lights.
 ▲ Visibility reduction by helicopters NA. When local altimeter setting not received, use Meriden altimeter setting and increase all MDA 100 feet.

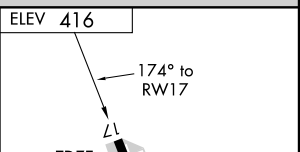
MISSED APPROACH: Climb to 2100 direct AKIJE and via track 168° to FLIBB and hold.

| | | |
|--------------------------|---|---------------------------------|
| AWOS-3 118.325 | NEW YORK APP CON 124.075 343.65 | UNICOM 122.725 (CTAF) |
|--------------------------|---|---------------------------------|



NE-1, 19 NOV 2009 to 17 DEC 2009

NE-1, 19 NOV 2009 to 17 DEC 2009



| | | | |
|----------------------|--------------|----------------------|--------|
| 4 NM Holding Pattern | MOMDE | 2100 AKIJE | FLIBB |
| 2400 | 174° | 168° TRK | ▲ |
| 354° | 174° | OGTEE 2.5 NM to RW17 | |
| 2000 | 3.04° TCH 40 | 1240 | |
| | 6.1 NM | 2.3 NM | 2.5 NM |

| CATEGORY | A | B | C | D |
|----------|-------|-------------|----|---|
| RNAV MDA | 960-1 | 544 (600-1) | NA | |
| CIRCLING | 960-1 | 544 (600-1) | NA | |

REIL Rwy 17 and 35
 MIRL Rwy 17-35