

CHESTER, CONNECTICUT

AL-6356 (FAA)

# RNAV (GPS) RWY 35

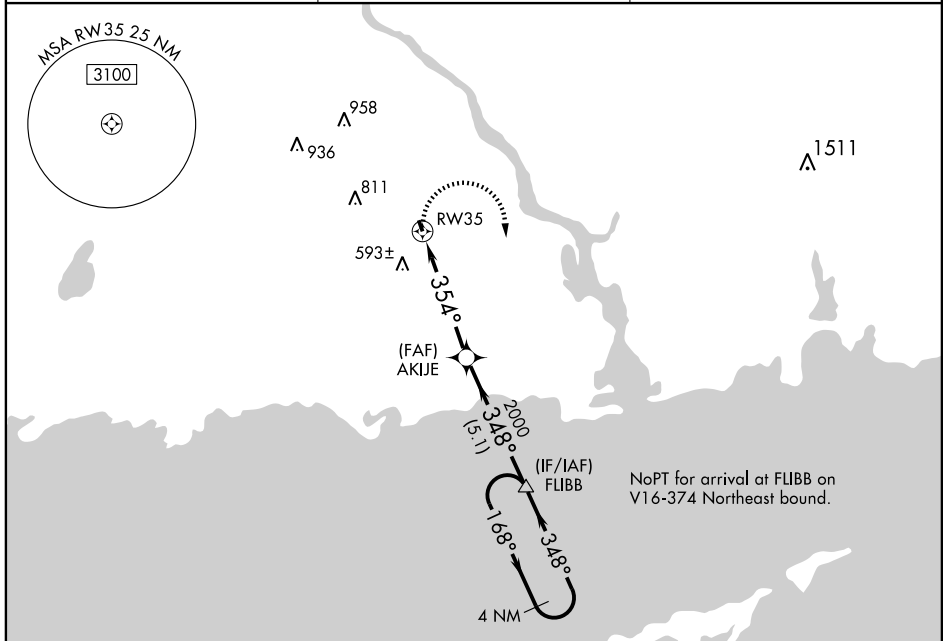
CHESTER (SNC)

APP CRS <b>354°</b>	Rwy Idg <b>2566</b>
	TDZE <b>416</b>
	Apt Elev <b>416</b>

**▲** DME/DME RNP-0.3 NA. Procedure NA at night except by prior arrangement for runway lights. Visibility reduction by helicopters NA. When local altimeter setting not received, use Meriden altimeter setting and increase all MDA 100 feet.

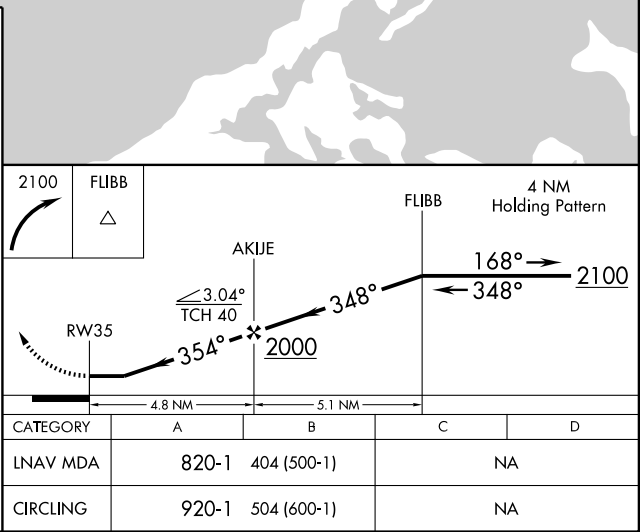
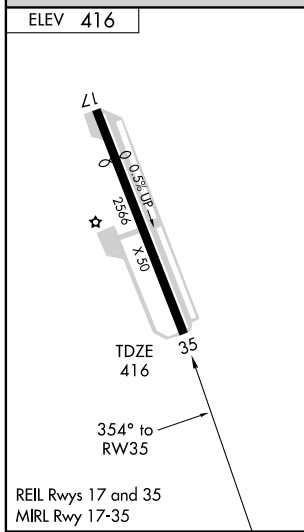
**MISSED APPROACH:** Climbing right turn to 2100 direct FLIBB and hold.

AWOS-3 <b>118.325</b>	NEW YORK APP CON <b>124.075 343.65</b>	UNICOM <b>122.725</b> (CTAF)
--------------------------	---	---------------------------------



NE-1, 11 MAR 2010 to 08 APR 2010

NE-1, 11 MAR 2010 to 08 APR 2010



CATEGORY	A	B	C	D
LNAV MDA	820-1	404 (500-1)	NA	
CIRCLING	920-1	504 (600-1)	NA	

CHESTER, CONNECTICUT  
Orig 09239

41° 23'N - 72° 30'W

# RNAV (GPS) RWY 35

CHESTER (SNC)