

CHESTER, CONNECTICUT

AL-6356 (FAA)

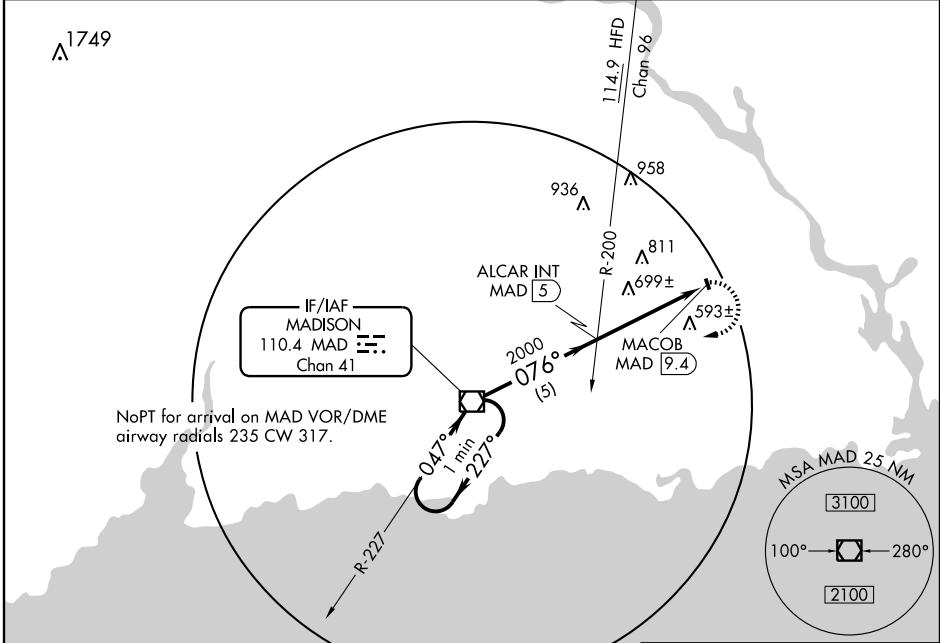
VOR-A
CHESTER(SNC)

VOR/DME MAD 110.4 Chan 41	APP CRS 076°	Rwy Idg TDZE Apt Elev	N/A N/A 416
---	------------------------	-----------------------------	--

⚠ Procedure NA at night except by prior arrangement for runway lights. When local altimeter setting not received, use Meriden altimeter setting and increase all MDA 100 feet.

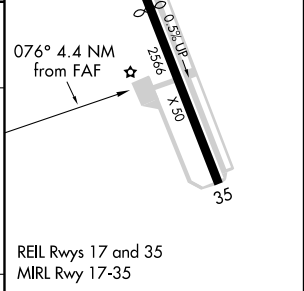
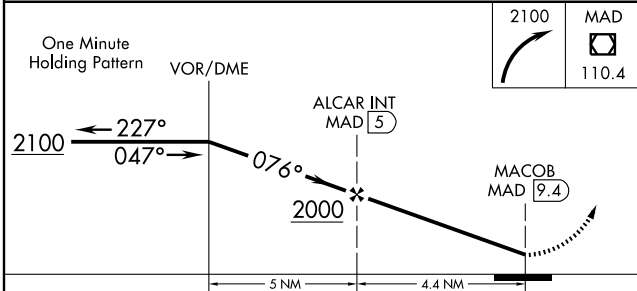
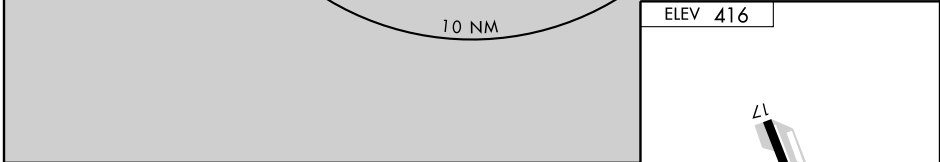
MISSED APPROACH: Climbing right turn to 2100 direct MAD VOR/DME and hold.

AWOS-3 118.325	NEW YORK APP CON 124.075 343.65	UNICOM 122.725 (CTAF)
--------------------------	---	---------------------------------



NE-1, 19 NOV 2009 to 17 DEC 2009

NE-1, 19 NOV 2009 to 17 DEC 2009



CATEGORY	A	B	C	D	FAF to MAP 4.4 NM					
CIRCLING	960-1	544 (600-1)	NA		Knots	60	90	120	150	180
					Min:Sec	4:24	2:56	2:12	1:46	1:28

CHESTER, CONNECTICUT
Amdt 4 09239

41° 23'N-72° 30'W

CHESTER (SNC)
VOR-A