

RNAV (GPS) RWY 9

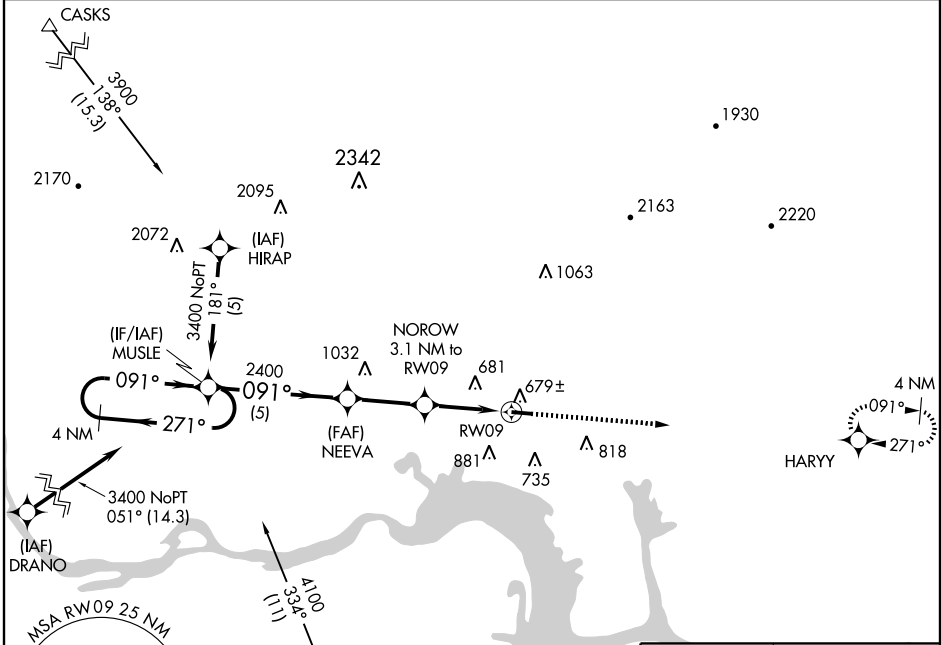
CLARKSVILLE MUNI (H35)

APP CRS 091°	Rwy Idg TDZE Apt Elev	4508 481 481
------------------------	-----------------------------	---

▼ Use Russellville Rgnl altimeter setting; If not received, use Fort Smith Rgnl altimeter setting and increase all MDAs 60'. DME/DME RNP-0.3 NA.
▲ NA When VGSI inoperative, procedure NA at night.

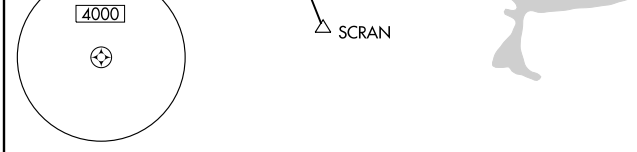
MISSED APPROACH: Climb to 3100 direct HARRY WP and hold.

MEMPHIS CENTER 128.475 377.15	UNICOM 122.8 (CTAF)
---	-------------------------------

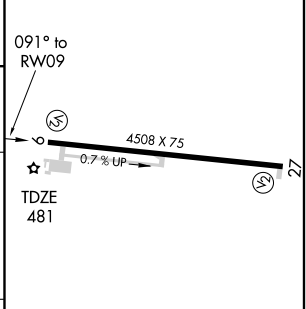
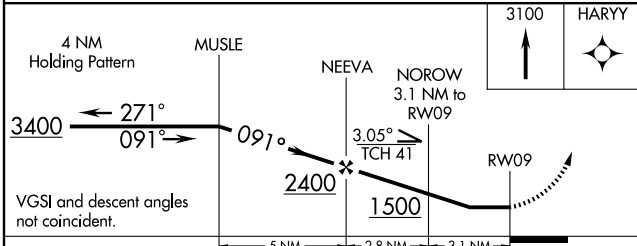


SC-1, 19 NOV 2009 to 17 DEC 2009

SC-1, 19 NOV 2009 to 17 DEC 2009



ELEV 481



CATEGORY	A	B	C	D
LNVA MDA	1060-1	579 (600-1)		NA
CIRCLING	1220-1 739 (800-1)	1240-1¼ 759 (800-1¼)		NA

MIRL Rwy 9-27