

ORLAND, CALIFORNIA

AL-6410 (FAA)

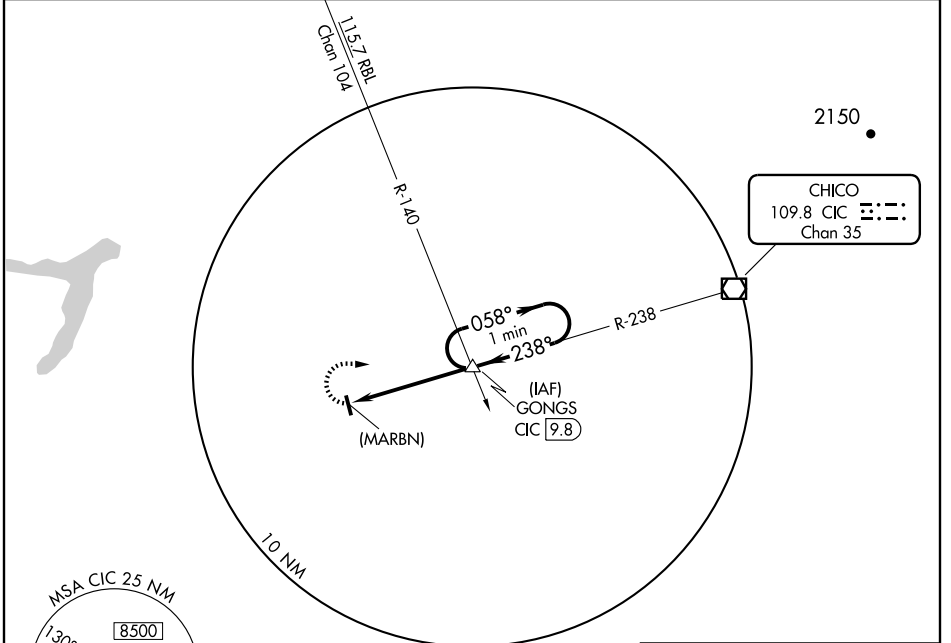
VOR/DME CIC <b>109.8</b> Chan <b>35</b>	APP CRS <b>238°</b>	Rwy Idg TDZE Apt Elev <b>N/A</b> <b>N/A</b> <b>215</b>
---	------------------------	---

**VOR or GPS-A**  
ORLAND/ HAIGH FIELD (O37)

**NA** Use Chico altimeter setting, when not received, use Redding altimeter setting.

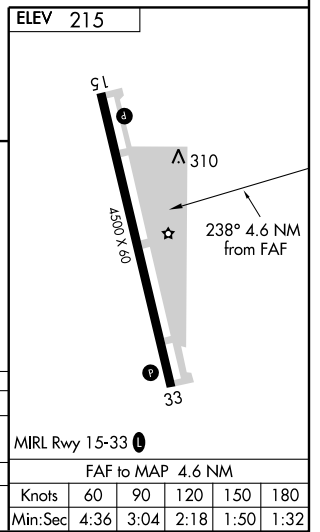
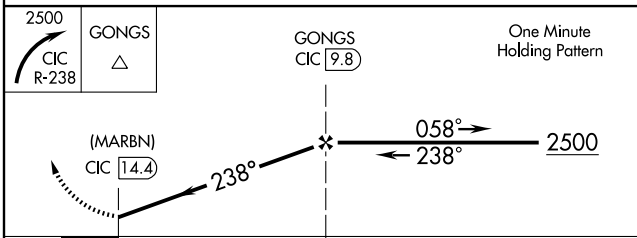
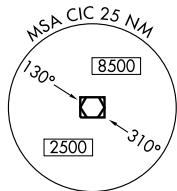
MISSED APPROACH: Climbing right turn to 2500 via CIC R-238 to GONGS INT and hold.

OAKLAND CENTER <b>132.2 350.3</b>	UNICOM <b>122.7</b> (CTAF) <b>0</b>
--------------------------------------	--



SW-2, 19 NOV 2009 to 17 DEC 2009

SW-2, 19 NOV 2009 to 17 DEC 2009



CATEGORY	A	B	C	D	MRL Rwy 15-33 <b>0</b>
CIRCLING	900-1 685 (700-1)		900-2 685 (700-2)	900-2 1/4 685 (700-2 1/4)	
REDDING ALTIMETER SETTING MINIMUMS					
CIRCLING	1020-1 805 (900-1)	1020-1 1/4 805 (900-1 1/4)	1020-2 1/4 805 (900-2 1/4)	1020-2 1/2 805 (900-2 1/2)	FAF to MAP 4.6 NM
					Knots 60 90 120 150 180
					Min:Sec 4:36 3:04 2:18 1:50 1:32

ORLAND, CALIFORNIA  
Amdt 6 03135

39°43'N - 122°09'W

ORLAND/ HAIGH FIELD (O37)  
**VOR or GPS-A**