

PINEVILLE, WEST VIRGINIA

AL-6411 (FAA)

# GPS RWY 26

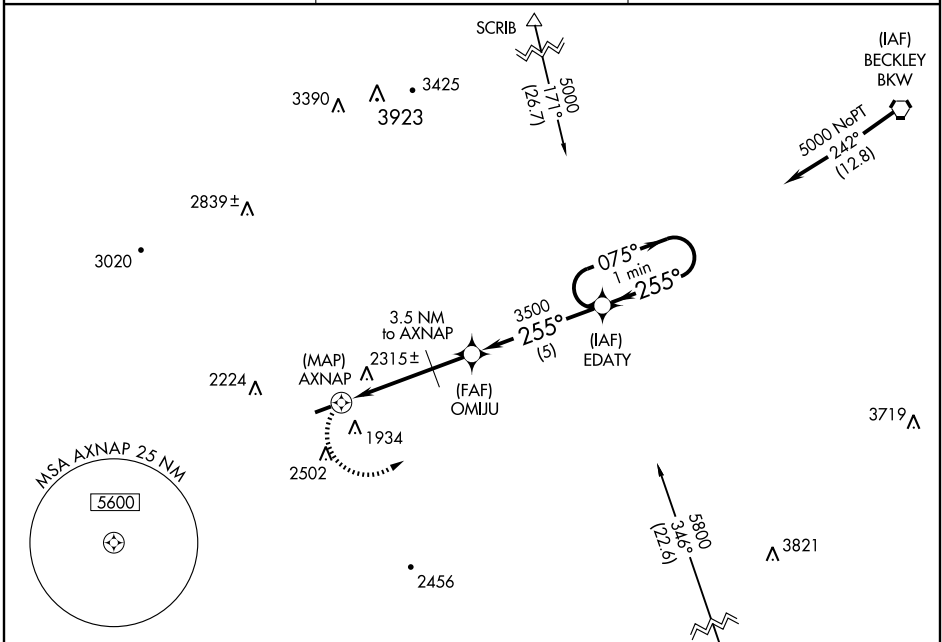
PINEVILLE/ KEE FIELD (I16)

APP CRS <b>255°</b>	Rwy Idg <b>3111</b>
	TDZE <b>1771</b>
	Apt Elev <b>1783</b>

**▽** Obtain local altimeter setting on CTAF; when not received, use Beckley altimeter setting.  
**△ NA** Procedure NA at night.

**MISSED APPROACH:** Climbing left turn to 4400 direct EDATY WP and hold.

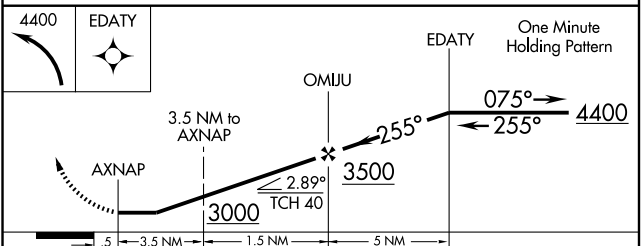
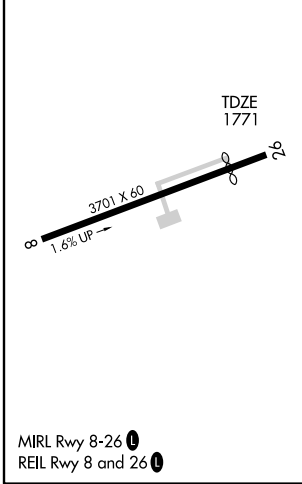
AWOS-3 <b>120.625</b>	CHARLESTON APP CON <b>118.95 269.125</b>	UNICOM <b>122.8 (CTAF) 0</b>
--------------------------	---	---------------------------------



NE-4, 11 MAR 2010 to 08 APR 2010

NE-4, 11 MAR 2010 to 08 APR 2010

ELEV 1783	Rwy 26 Idg 3111'
-----------	------------------



CATEGORY	A	B	C	D
S-26	2580-1 809 (800-1)	2580-1¼ 809 (800-1¼)	2580-2¼ 809 (800-2¼)	NA
CIRCLING	2620-1 837 (900-1)	2620-1¼ 837 (900-1¼)	2620-2½ 837 (900-2½)	NA
BECKLEY ALTIMETER SETTING MINIMUMS				
S-26	2740-1¼ 969 (1000-1¼)	2740-1½ 969 (1000-1½)	2740-3 969 (1000-3)	NA
CIRCLING	2760-1¼ 977 (1000-1¼)	2760-1½ 977 (1000-1½)	2780-3 997 (1000-3)	NA

PINEVILLE, WEST VIRGINIA  
Orig-B 04274

37°36'N · 81°34'W

# GPS RWY 26