

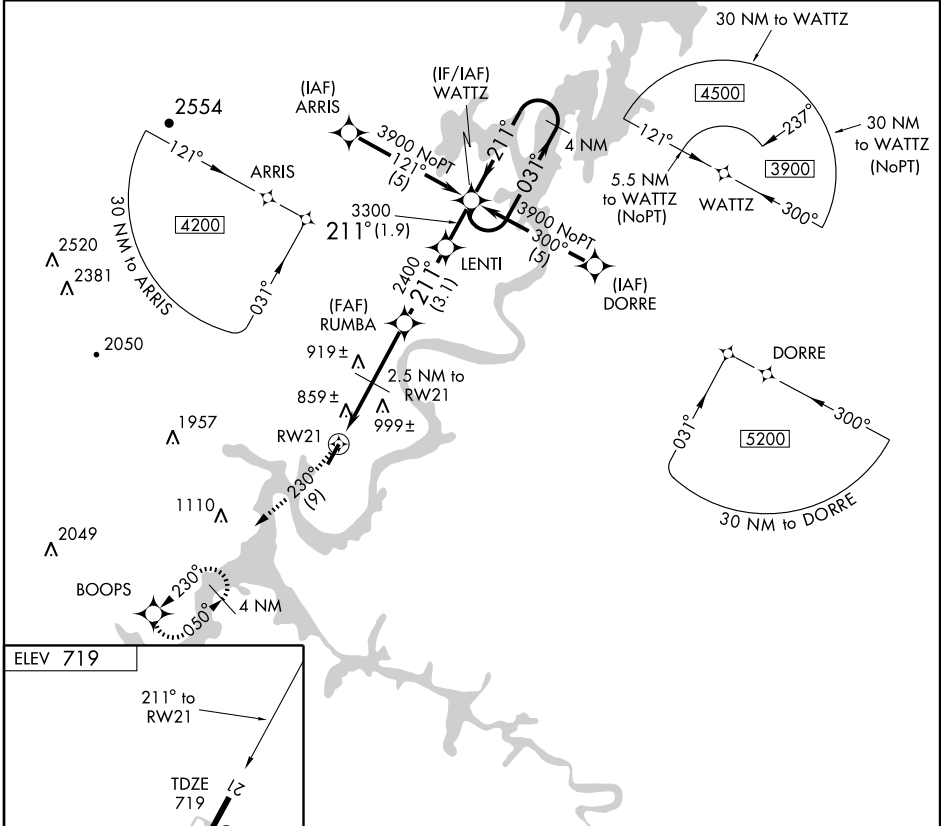
RNAV (GPS) RWY 21

DAYTON/MARK ANTON (2A0)

APP CRS 211°	Rwy Idg 5000
	TDZE 719
	Apt Elev 719

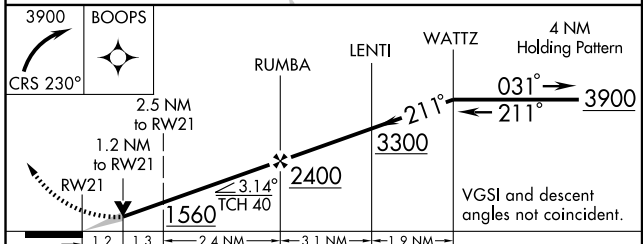
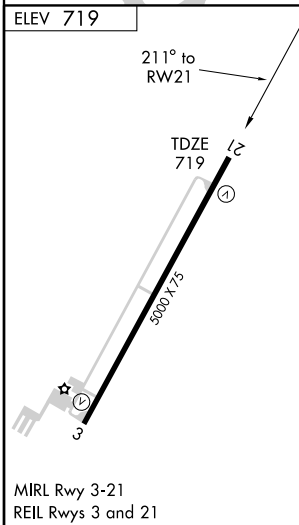
MISSED APPROACH: Climbing right turn to 3900 via 230° course to BOOPS WP and hold.

AWOS-3 135.075	CHATTANOOGA APP CON* 125.1 379.1	GCO 121.725	UNICOM 123.0 (CTAF)
--------------------------	--	-----------------------	-------------------------------



SE-1, 19 NOV 2009 to 17 DEC 2009

SE-1, 19 NOV 2009 to 17 DEC 2009



CATEGORY	A	B	C	D
LNAV MDA	1120-1	401 (500-1)	1120-1¼	401 (500-1¼)
CIRCLING	1440-1 721 (800-1)	1460-1¼ 741 (800-1¼)	1460-2¼ 741 (800-2¼)	1460-2½ 741 (800-2½)