

DUMAS, TEXAS

AL-6429 (FAA)

GPS RWY 19

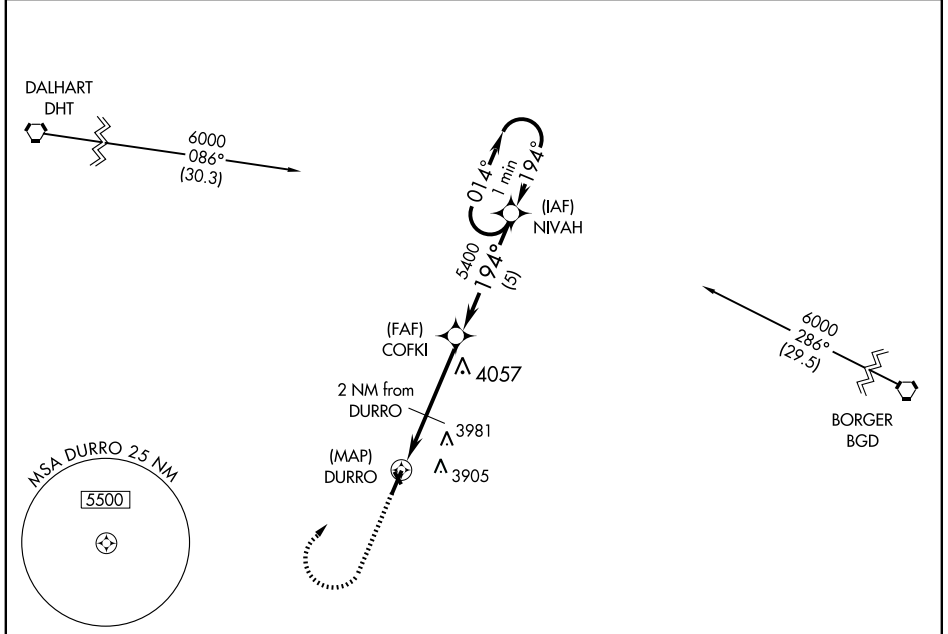
DUMAS/MOORE COUNTY (DUX)

APP CRS	Rwy Idg	5474
194°	TDZE	3701
	Apt Elev	3705

Obtain local altimeter setting on CTAF; when not received, use Amarillo Intl altimeter setting. **▲ NA**

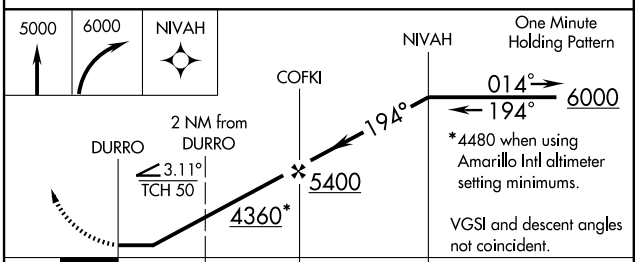
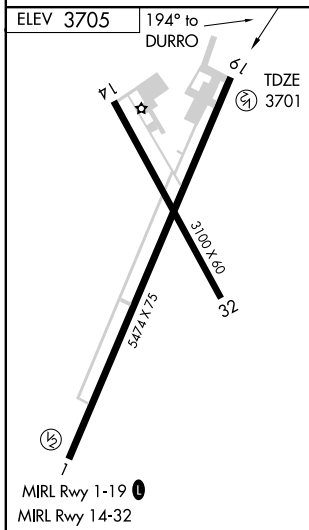
MISSED APPROACH: Climb to 5000 then climbing right turn to 6000 direct NIVAH and hold.

AWOS-3 118.075	ALBUQUERQUE CENTER 127.85 285.475	UNICOM 122.8 (CTAF)
--------------------------	---	-------------------------------



SC-2, 14 JAN 2010 to 11 FEB 2010

SC-2, 14 JAN 2010 to 11 FEB 2010



CATEGORY	A	B	C	D
S-19	4200-1	499 (500-1)	4200-1 ¼ 499 (500-1¼)	4200-1½ 499 (500-1½)
CIRCLING	4200-1 495 (500-1)	4220-1 515 (600-1)	4220-1 ½ 515 (600-1½)	4300-2 595 (600-2)
AMARILLO INTL ALTIMETER SETTING MINIMUMS				
S-19	4320-1	619 (700-1)	4320-1 ¾ 619 (700-1¾)	4320-2 619 (700-2)
CIRCLING	4320-1	615 (700-1)	4320-1 ¾ 615 (700-1¾)	4400-2 ¼ 695 (700-2¼)

DUMAS, TEXAS
Orig-A 08045

35°51'N-102°01'W

DUMAS/MOORE COUNTY (DUX)
GPS RWY 19