

# RNAV (GPS) RWY 19

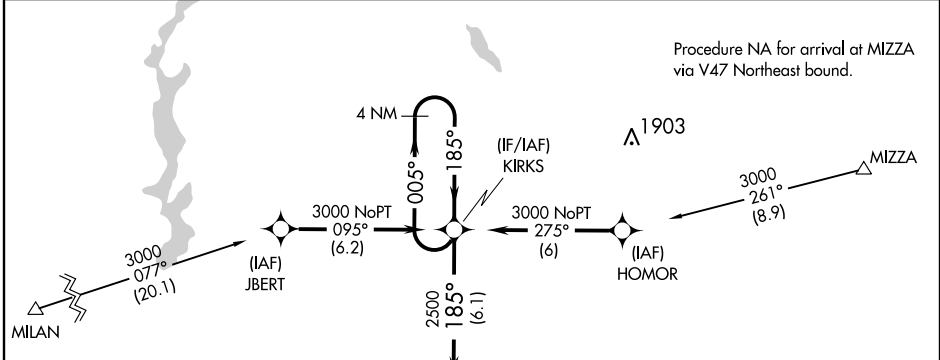
HARRISON/CINCINNATI WEST (I67)

APP CRS	Rwy Idg	<b>2583</b>
<b>185°</b>	TDZE	<b>584</b>
	Apt Elev	<b>584</b>

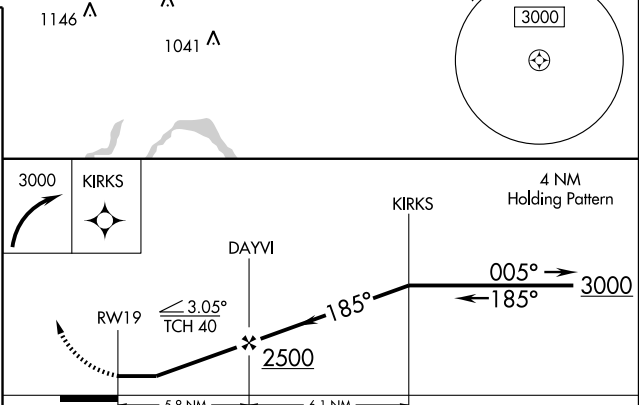
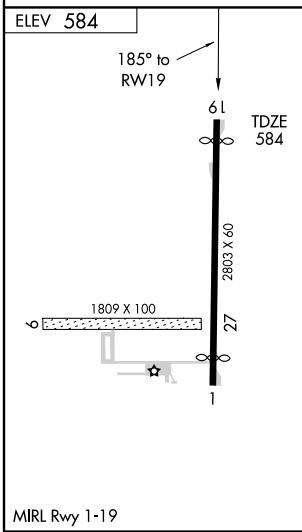
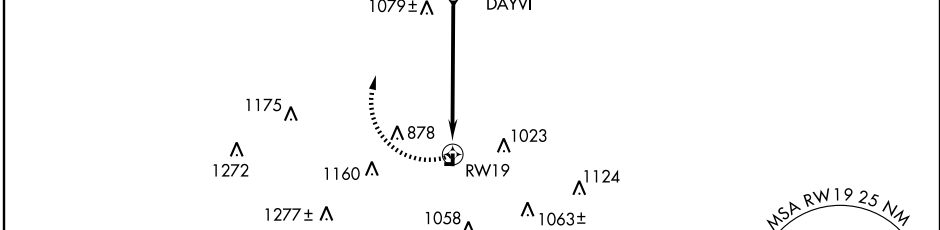
**⚠** DME/DME RNP-0.3 NA. Visibility reduction by helicopters NA. Use Butler Co Rgnl altimeter setting, when not received, use Cincinnati/Northern Kentucky Intl altimeter setting and increase all MDA 40 feet.

**⚠** MISSED APPROACH: Climbing right turn 3000 direct KIRKS and hold.

CINCINNATI APP CON <b>128.7 254.25</b>	UNICOM <b>123.0 (CTAF)</b>
---	-------------------------------



Procedure NA for arrival at MILAN via V97 Northwest bound and T213 Southwest bound.



CATEGORY	A	B	C	D
LNAV MDA	1380-1 796 (800-1)	1380-1¼ 796 (800-1¼)	NA	
CIRCLING	1380-1 796 (800-1)	1380-1¼ 796 (800-1¼)	NA	

EC-2, 11 MAR 2010 to 08 APR 2010

EC-2, 11 MAR 2010 to 08 APR 2010