

GIDEON, MISSOURI

AL-6437 (FAA)

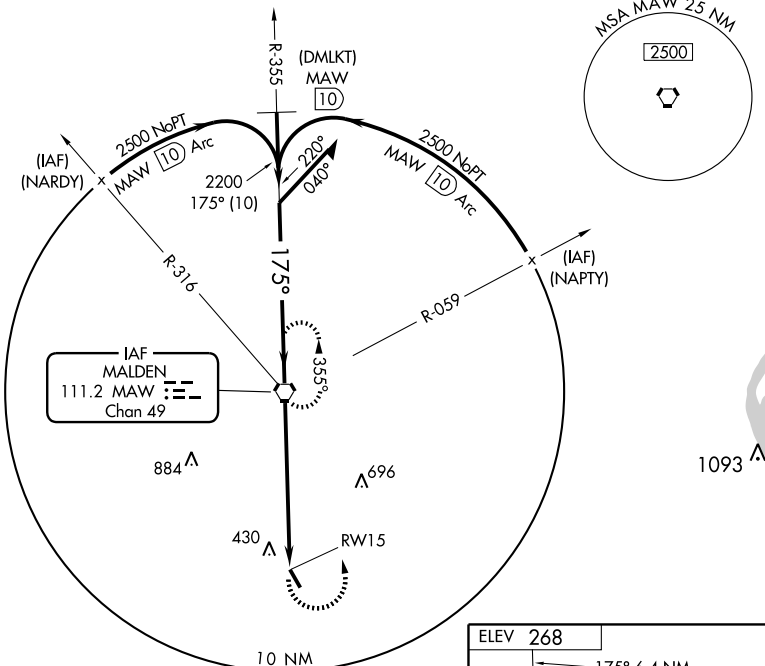
VOR or GPS RWY 15

GIDEON MEMORIAL (M85)

VORTAC MAW 111.2 Chan 49	APP CRS 175°	Rwy Idg 4504 TDZE 268 Apt Elev 268
--	------------------------	---

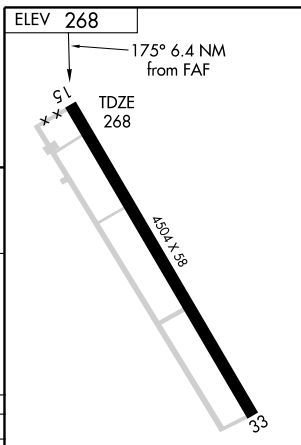
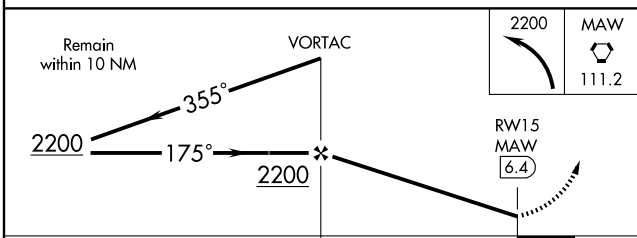
NA Procedure not authorized at night. Use Dyersburg, TN altimeter setting. MISSED APPROACH: Climbing left turn to 2200 direct MAW VORTAC and hold.

DYERSBURG AWOS-3 135.625	MEMPHIS CENTER 133.65 292.15	CTAF 122.9
------------------------------------	--	----------------------



NC-3, 11 MAR 2010 to 08 APR 2010

NC-3, 11 MAR 2010 to 08 APR 2010



CATEGORY	A	B	C	D
S-15	820-1 552 (600-1)		820-1½ 552 (600-1½)	820-1¾ 552 (600-1¾)
CIRCLING	860-1 592 (600-1)		860-1½ 592 (600-1½)	860-2 592 (600-2)

FAF to MAP 6.4 NM					
Knots	60	90	120	150	180
Min:Sec	6:24	4:16	3:12	2:34	2:08

GIDEON, MISSOURI
Amdt 2 09127

36°27'N-89°54'W

GIDEON MEMORIAL (M85) VOR or GPS RWY 15