

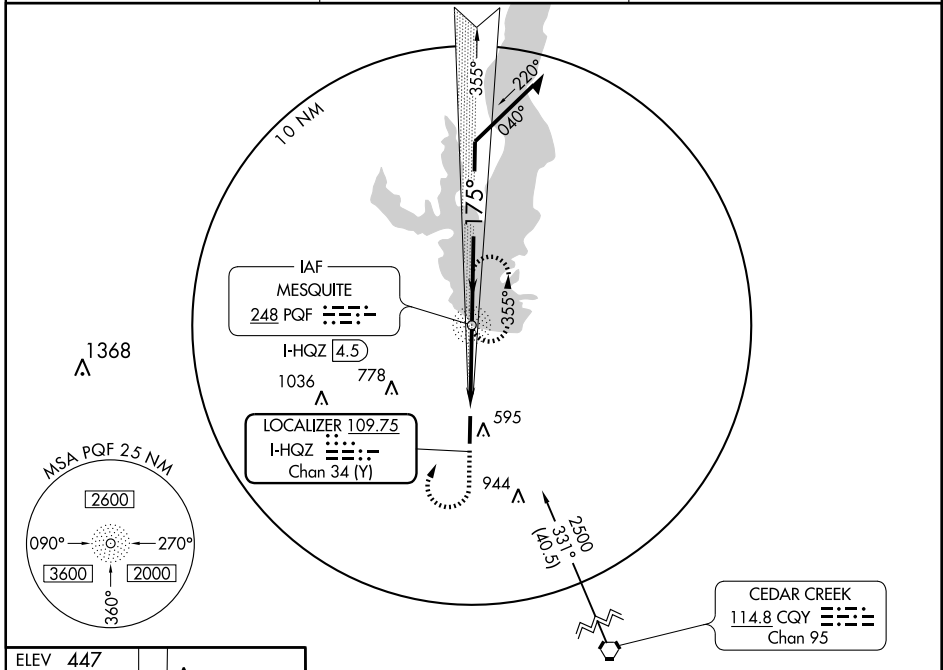
LOC I-HQZ <b>109.75</b>	APP CRS <b>175°</b>	Rwy Idg TDZE Apt Elev	<b>5999</b> <b>447</b> <b>447</b>
Chan <b>34 (Y)</b>			

# ILS or LOC RWY 17

MESQUITE METRO (HQZ)

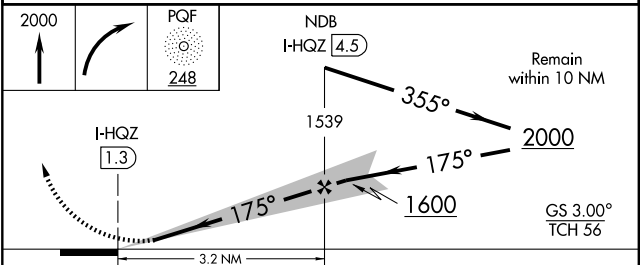
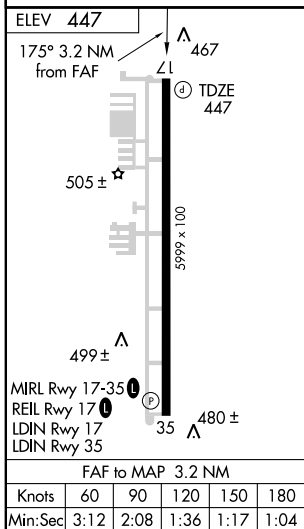
**NA** When local altimeter setting not received use Dallas-Love Field altimeter setting. ADF Required. MISSED APPROACH: Climb straight ahead to 2000, then turn right direct PQF NDB and hold.

AWOS-3 <b>118.175</b>	REGIONAL APP CON <b>125.2 343.65</b>	UNICOM <b>123.05 (CTAF)</b>
--------------------------	---	--------------------------------



SC-2, 11 MAR 2010 to 08 APR 2010

SC-2, 11 MAR 2010 to 08 APR 2010



CATEGORY	A	B	C	D
S-ILS 17	697- <sup>3</sup> / <sub>4</sub>	250 (300- <sup>3</sup> / <sub>4</sub> )		NA
S-LOC 17	740-1	293 (300-1)		NA
CIRCLING	960-1	513 (600-1)	960-1½ 513 (600-1½)	NA
DALLAS-LOVE FIELD ALTIMETER SETTING MINIMUMS				
S-ILS 17	743-1	296 (300-1)		NA
S-LOC 17	800-1	353 (400-1)		NA
CIRCLING	1000-1	553 (600-1)	1000-1½ 553 (600-1½)	NA