

LOC BC RWY 35

MESQUITE METRO (H/QZ)

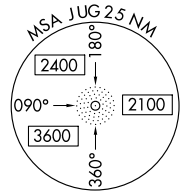
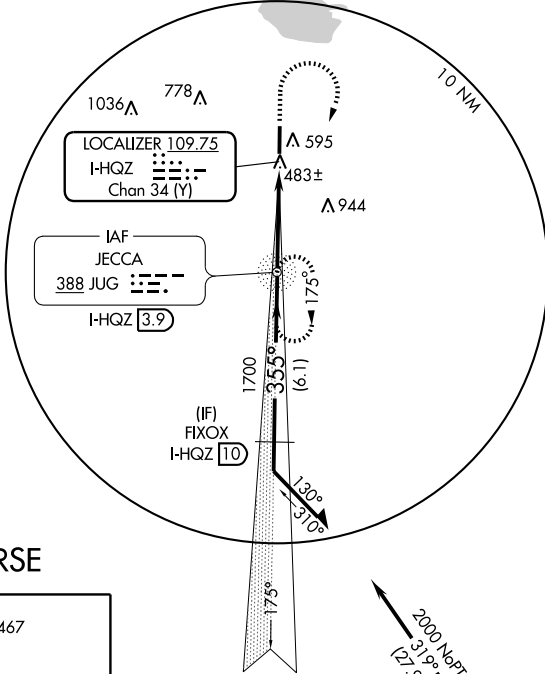
LOC I-HQZ 109.75	APP CRS 355°	Rwy Idg TDZE Apt Elev	5999 443 447
Chan 34 (Y)			

⚠ ADF required. When local altimeter setting not received, use Dallas-Love Field altimeter setting and increase all MDA 60 feet. Increase S-35 Cat C visibility 1/4 mile.

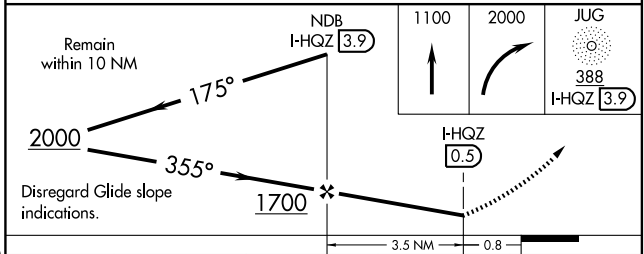
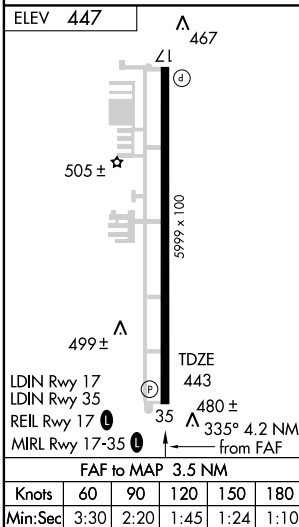
MISSED APPROACH: Climb to 1100 then climbing right turn to 2000 direct JUG NDB/I-HQZ 3.9 DME and hold.

AWOS-3 118.175	REGIONAL APP CON 125.2 343.65	UNICOM 123.05 (CTAF) 0
--------------------------	-----------------------------------------	----------------------------------

△ 1368



BACK COURSE



CATEGORY	A	B	C	D
S-35		800-1 357 (400-1)		NA
CIRCLING	960-1	513 (600-1)	960-1½ 513 (600-1½)	NA

SC-2, 19 NOV 2009 to 17 DEC 2009

SC-2, 19 NOV 2009 to 17 DEC 2009