

MESQUITE, TEXAS

AL-6444 (FAA)

RNAV (GPS) RWY 17

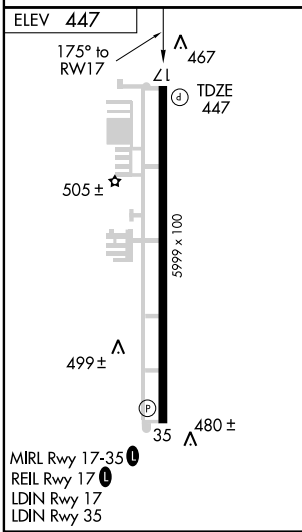
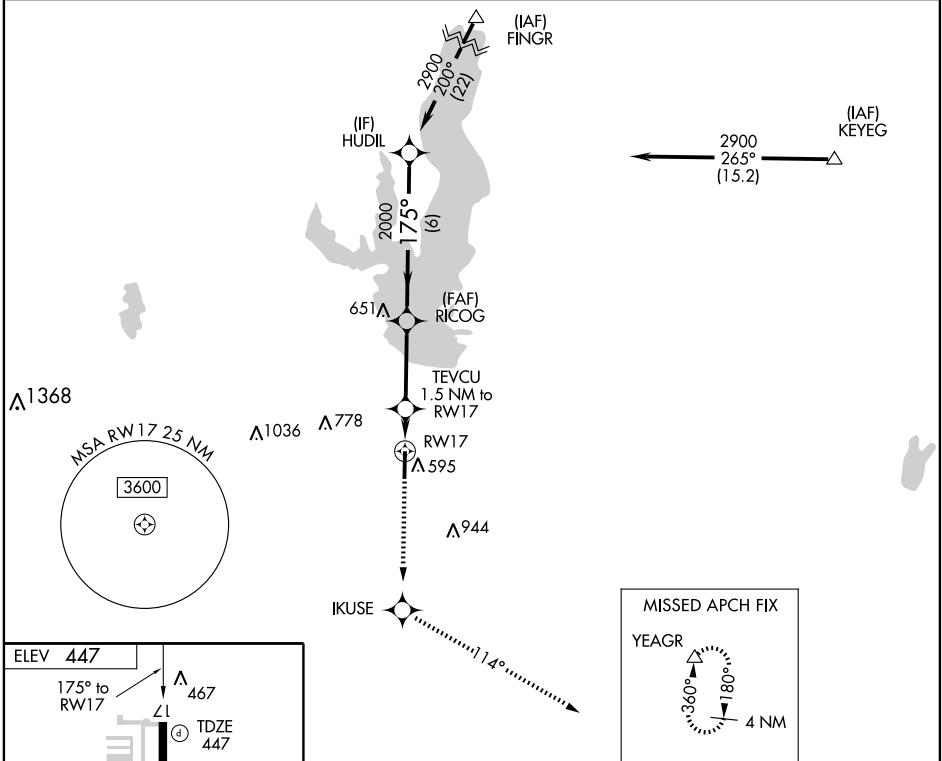
MESQUITE METRO (HQZ)

WAAS Ch 58301 W17A	APP CRS 175°	Rwy Idg 5999 TDZE 447 Apt Elev 447
--	------------------------	---

▼ DME/DME RNP-0.3 NA. Visibility reduction by helicopters NA.
▲ When local altimeter setting not received, use Dallas Love Field altimeter setting and increase all DA/MDA 60 feet. Increase LPV visibility 1/4 mile, all Cats.

MISSED APPROACH: Climb to 3000 direct IKUSE and via 114° track to YEAGR and hold.

AWOS-3 118.175	REGIONAL APP CON 125.2 343.65	UNICOM 123.05 (CTAF) ①
--------------------------	---	----------------------------------



3000	IKUSE	TRK 114°	YEAGR	HUDIL
*LNAV only				2900
RW17				Procedure Turn NA
TEVCU 1.5 NM to RW17				GS 3.00°
RICOG				TCH 56
*980				
1.5 NM				
3.1 NM				
6 NM				
CATEGORY	A	B	C	D
LPV DA	697-3/4 250 (300-3/4)			NA
LNAV MDA	860-1	413 (500-1)	860-1 1/4 413 (500-1 1/4)	NA
CIRCLING	960-1	513 (600-1)	960-1 1/2 513 (600-1 1/2)	NA

MESQUITE, TEXAS
Amdt 1 08269

32°45'N-96°32'W

RNAV (GPS) RWY 17

SC-2, 19 NOV 2009 to 17 DEC 2009

SC-2, 19 NOV 2009 to 17 DEC 2009