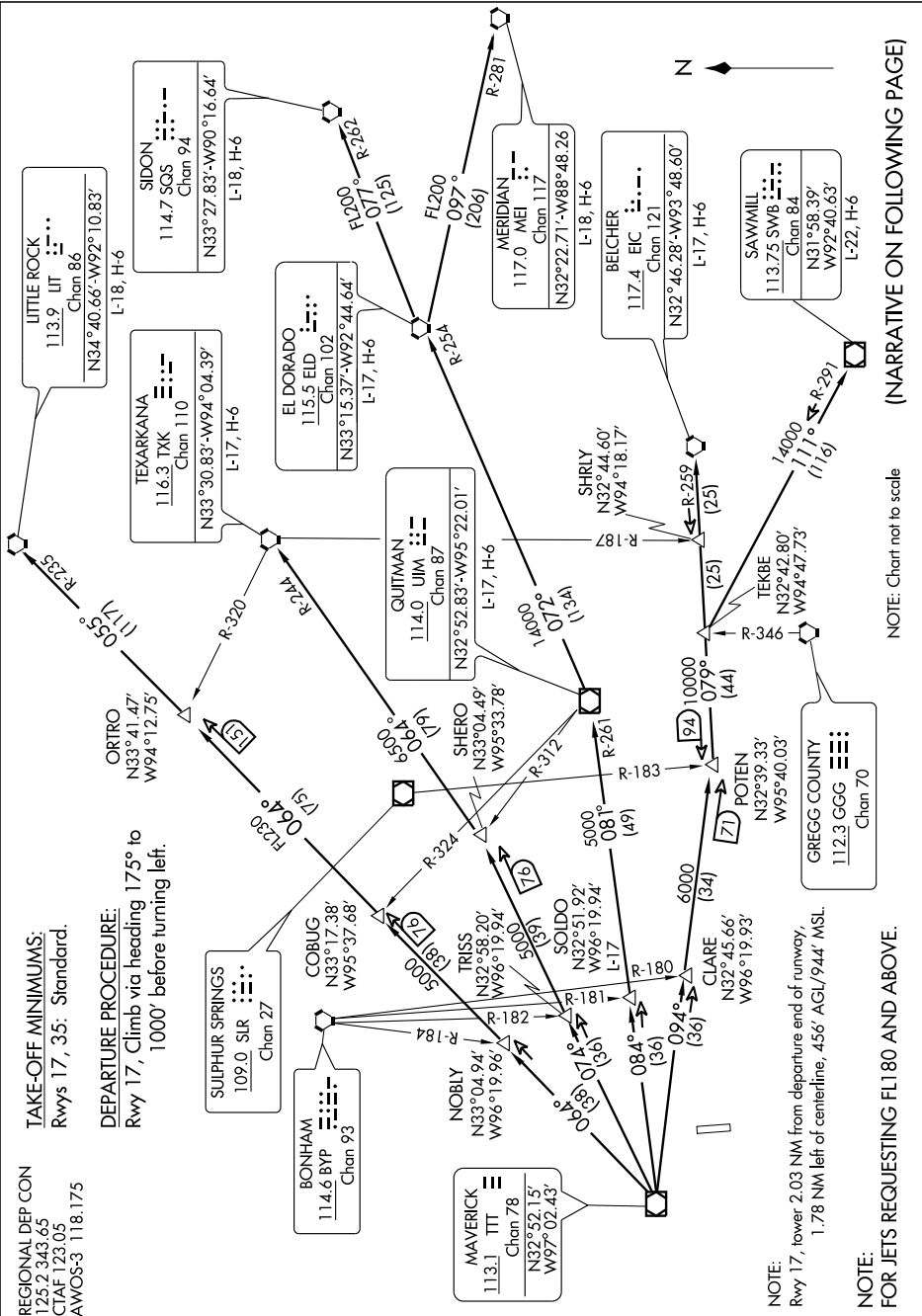


SC-2, 19 NOV 2009 to 17 DEC 2009

TAKE-OFF MINIMUMS:
Rwys 17, 35: Standard.

REGIONAL DEP CON
125.2 343.65
CTAF 123.05
AWOS-3 118.175

DEPARTURE PROCEDURE:
Rwy 17, Climb via heading 175° to 1000' before turning left.



NOTE:
Rwy 17, lower 2.03 NM from departure end of runway, 1.78 NM left of centerline, 456' AGL/944' MSL.

NOTE:
FOR JETS REQUESTING FL180 AND ABOVE.

NOTE: Chart not to scale

(NARRATIVE ON FOLLOWING PAGE)