

MESQUITE, TEXAS

AL-6444 (FAA)

| | | |
|--|------------------------|---|
| WAAS Ch 58301 W17A | APP CRS 175° | Rwy Idg 5999 TDZE 447 Apt Elev 447 |
|--|------------------------|---|

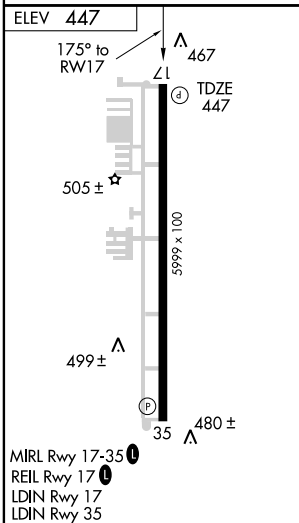
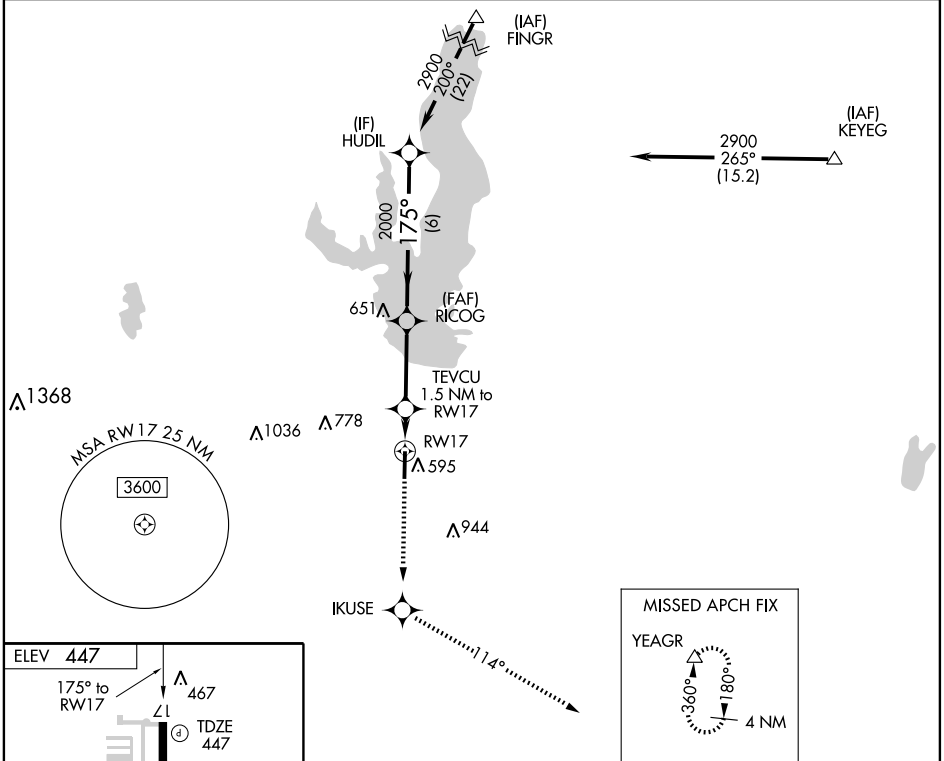
RNAV (GPS) RWY 17

MESQUITE METRO (HQZ)

⚠ DME/DME RNP-0.3 NA. Visibility reduction by helicopters NA. When local altimeter setting not received, use Dallas Love Field altimeter setting and increase all DA/MDA 60 feet. Increase LPV visibility 1/4 mile, all Cats.

MISSED APPROACH: Climb to 3000 direct IKUSE and via 114° track to YEAGR and hold.

| | | |
|--------------------------|---|----------------------------------|
| AWOS-3 118.175 | REGIONAL APP CON 125.2 343.65 | UNICOM 123.05 (CTAF) ① |
|--------------------------|---|----------------------------------|



| 3000 | IKUSE | TRK 114° | YEAGR | HUDIL |
|----------------------|-----------------------|-------------|---------------------------|-------------------|
| *LNAV only | | | | 2900 |
| RW17 | | | | Procedure Turn NA |
| TEVCU 1.5 NM to RW17 | | | | GS 3.00° |
| RICOG | | | | TCH 56 |
| *980 | | | | |
| 1.5 NM | | | | |
| 3.1 NM | | | | |
| 6 NM | | | | |
| CATEGORY | A | B | C | D |
| LPV DA | 697-3/4 250 (300-3/4) | | | NA |
| LNAV MDA | 860-1 | 413 (500-1) | 860-1 1/4 413 (500-1 1/4) | NA |
| CIRCLING | 960-1 | 513 (600-1) | 960-1 1/2 513 (600-1 1/2) | NA |

MESQUITE, TEXAS
Amdt 1 08269

32°45'N-96°32'W

RNAV (GPS) RWY 17

MESQUITE METRO (HQZ)

SC-2, 11 MAR 2010 to 08 APR 2010

SC-2, 11 MAR 2010 to 08 APR 2010