

REGIONAL DEP CON
125.2 343.65
CTAF 123.05
AWOS-3 118.175

TAKE-OFF OBSTACLE:

Rwy 17: Tower 2 NM from DER, 1.8 NM left of centerline, 456' AGL/944' MSL.

TULSA
114.4 TUL
Chan 91
N36°11.78'
W95°47.29'
L-15, H-6

OKMULGEE
114.9 OKM
Chan 96
N35°41.59'
W95°51.96'
L-15, H-6

MC ALESTER
112.0 MLC
Chan 57
N34°50.97'
W95°46.94'
L-17, H-6

WILL ROGERS
114.1 IRW
Chan 88
N35°21.52'
W97°36.55'
L-15, H-6

ROLLS
N35°43.36'
W99°28.24'
L-15, H-6

MRMAC
N34°50.48'
W98°06.57'

ARDMORE
116.7 ADM
Chan 114
N34°12.70'-W97°10.09'
L-17, H-6

BOWIE
112.4 UKW
Chan 71

LOWGN
N33°27.05'
W97°14.99'

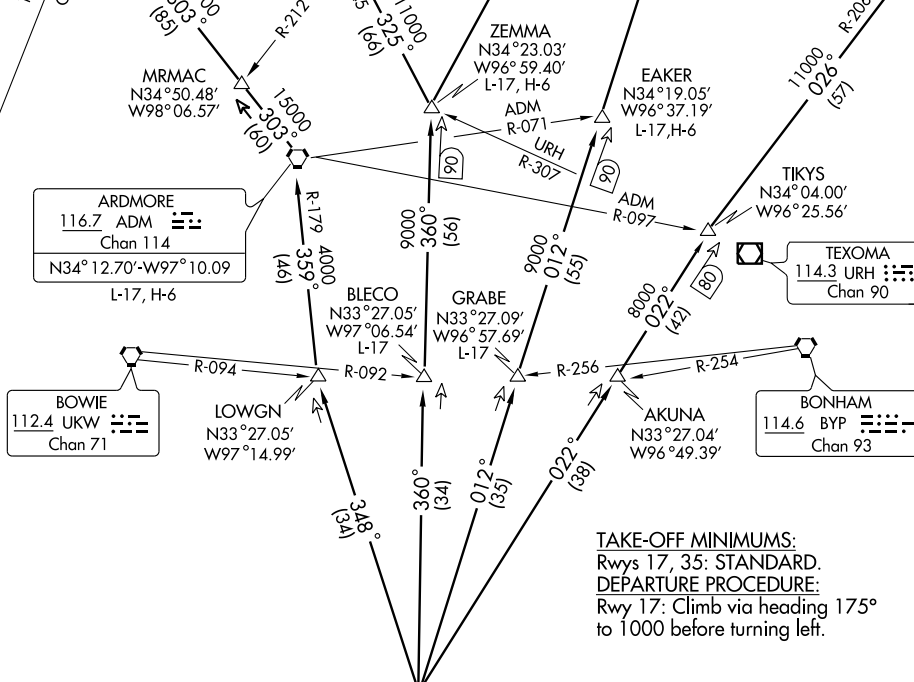
BLECO
N33°27.05'
W97°06.54'
L-17

GRABE
N33°27.09'
W96°57.69'
L-17

AKUNA
N33°27.04'
W96°49.39'

BONHAM
114.6 BYP
Chan 93

RANGER
115.7 FUZ
Chan 104
N32°53.37'-W97°10.77'



TAKE-OFF MINIMUMS:
Rwys 17, 35: STANDARD.
DEPARTURE PROCEDURE:
Rwy 17: Climb via heading 175° to 1000 before turning left.

(NARRATIVE ON FOLLOWING PAGE)

NOTE: Chart not to scale

SC-2, 11 MAR 2010 to 08 APR 2010

SC-2, 11 MAR 2010 to 08 APR 2010