

HEREFORD, TEXAS

AL-6446 (FAA)

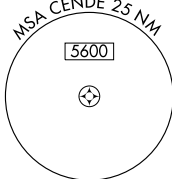
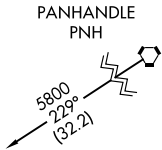
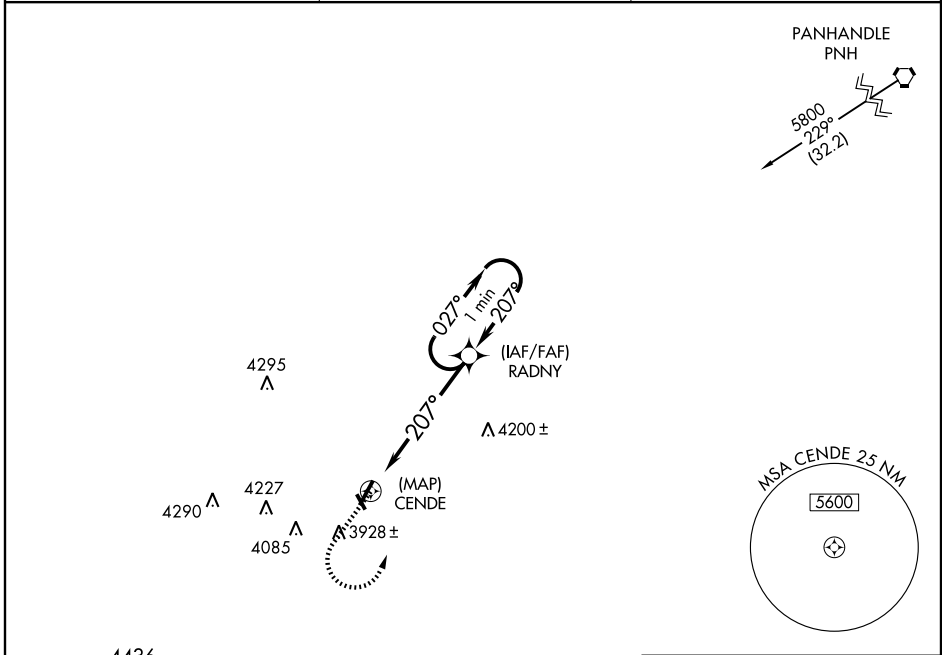
GPS RWY 20

HEREFORD MUNI (HR.X)

APP CRS	Rwy Idg	6100
207°	TDZE	3783
	Apt Elev	3783

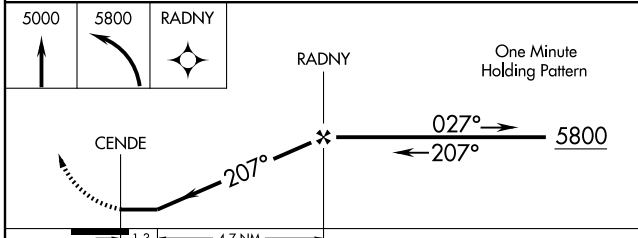
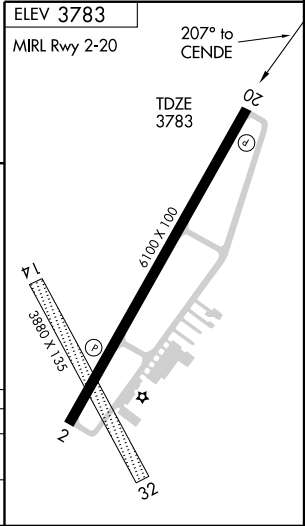
▲ NA Use Rick Husband Amarillo Intl altimeter setting. MISSED APPROACH: Climb to 5000 then climbing left turn to 5800 direct RADNY WP and hold.

AWOS-3 118.05	AMARILLO APP CON* 119.5 307.0	UNICOM 122.8 (CTAF)
-------------------------	---	-------------------------------



SC-2, 14 JAN 2010 to 11 FEB 2010

SC-2, 14 JAN 2010 to 11 FEB 2010



CATEGORY	A	B	C	D
S-20	4260-1	477 (500-1)	4260-1¼ 477 (500-1¼)	4260-1½ 477 (500-1½)
CIRCLING	4340-1	557 (600-1)	4340-1½ 557 (600-1½)	4400-2 617 (700-2)

HEREFORD, TEXAS
Orig-A 09295

34°52'N-102°20'W

HEREFORD MUNI (HR.X)
GPS RWY 20