

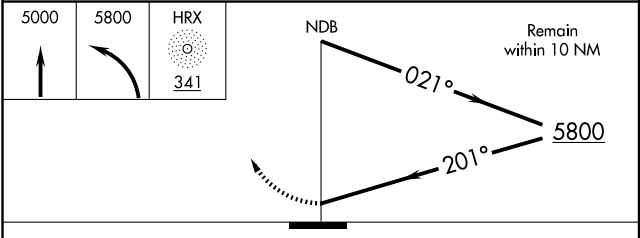
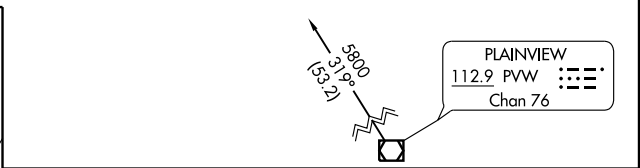
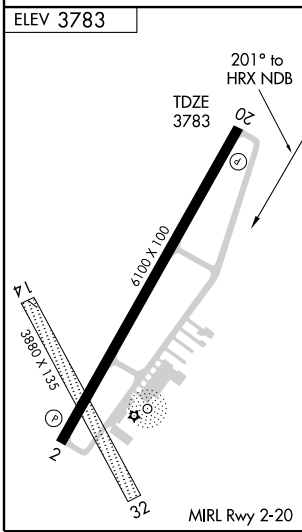
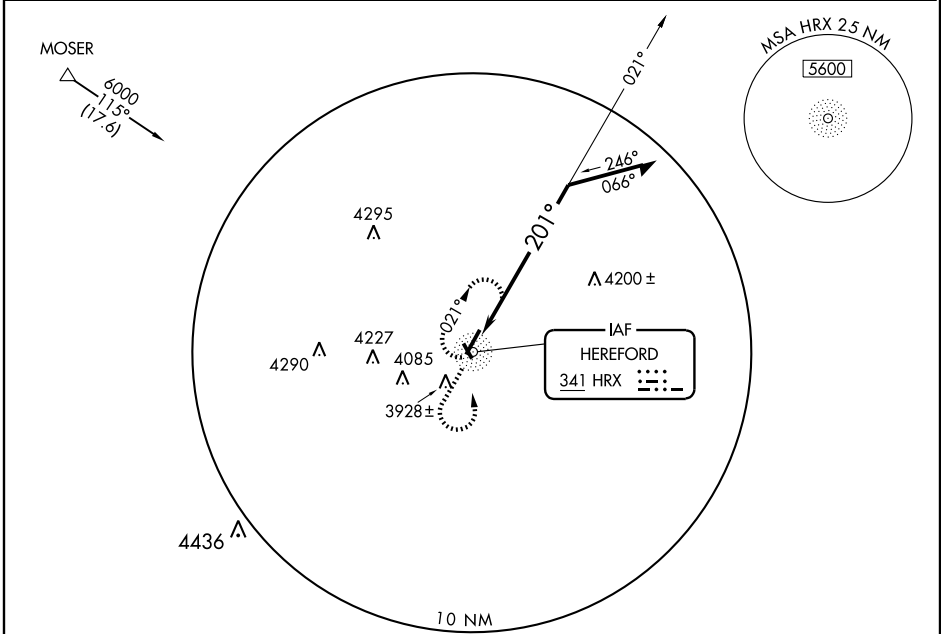
# NDB RWY 20

HEREFORD MUNI (HRX)

NDB HRX <b>341</b>	APP CRS <b>201°</b>	Rwy Idg TDZE Apt Elev	<b>6100</b> <b>3783</b> <b>3783</b>
-----------------------	------------------------	-----------------------------	---

▼ Use Amarillo Intl altimeter setting.  
 ▲ NA MISSED APPROACH: Climb to 5000 then climbing left turn to 5800 direct HRX NDB and hold.

AWOS-3 <b>118.05</b>	AMARILLO APP CON* <b>119.5 307.0</b>	UNICOM <b>122.8 (CTAF)</b>
-------------------------	---	-------------------------------



CATEGORY	A	B	C	D
S-20	4420-1	637 (700-1)	4420-1¼ 637 (700-1¾)	4420-2 637 (700-2)
CIRCLING	4420-1	637 (700-1)	4420-1¼ 637 (700-1¾)	4440-2 657 (700-2)

SC-2, 11 MAR 2010 to 08 APR 2010

SC-2, 11 MAR 2010 to 08 APR 2010