

SAND SPRINGS, OKLAHOMA

AL-6472 (FAA)

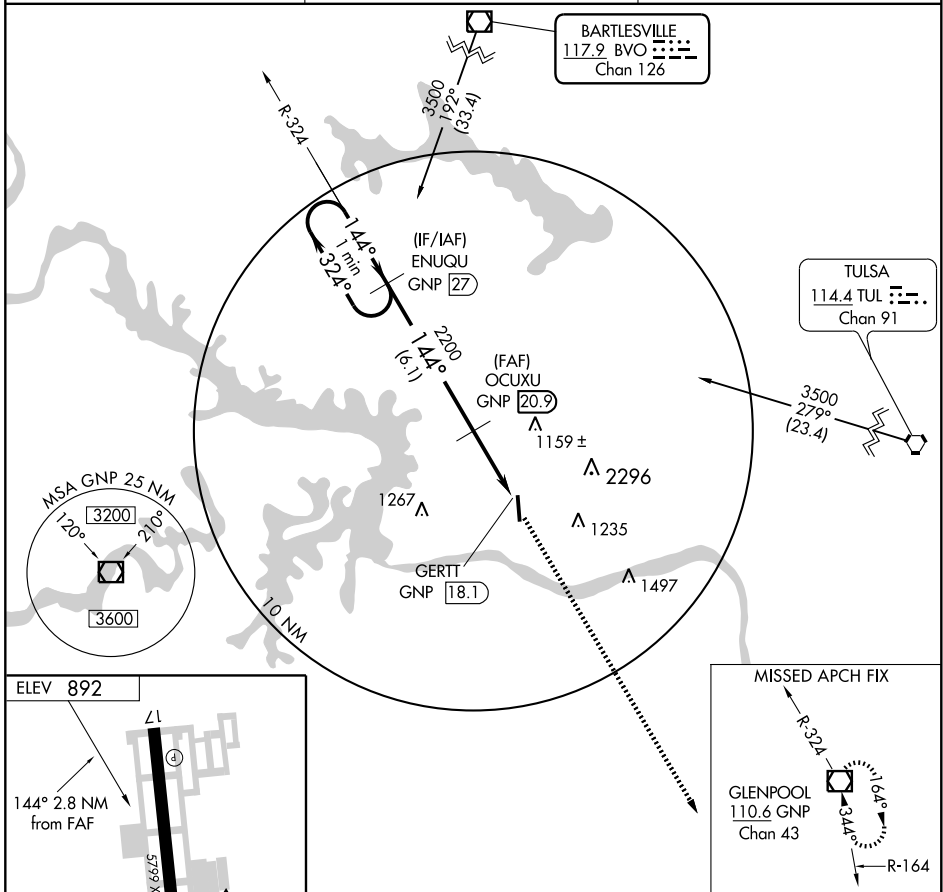
VOR/DME GNP <b>110.6</b> Chan <b>43</b>	APP CRS <b>144°</b>	Rwy Idg TDZE Apt Elev	<b>N/A</b> <b>N/A</b> <b>892</b>
---	------------------------	-----------------------------	--

# VOR/DME-A

SAND SPRINGS/ WILLIAM R. POGUE MUNI (OWP)

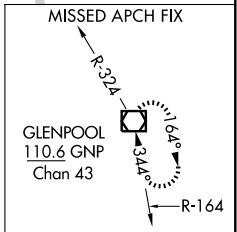
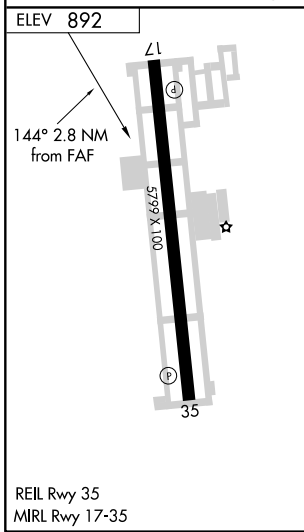
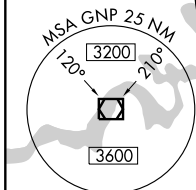
**NA** When local altimeter setting not received, use Tulsa Inlt altimeter setting and increase MDA 60 feet and Cat C visibility ¼ mile. MISSED APPROACH: Climb to 3000 via GNP R-324 to GNP VOR/DME and hold.

AWOS-3 <b>118.325</b>	TULSA APP CON <b>124.0 338.3</b>	UNICOM <b>122.7 (CTAF)</b>
--------------------------	-------------------------------------	-------------------------------



SC-1, 11 MAR 2010 to 08 APR 2010

SC-1, 11 MAR 2010 to 08 APR 2010



One Minute Holding Pattern	ENUQU GNP 27	OCUXU GNP 20.9	3000 GNP R-324	GNP 110.6
2600 ← 324°	144° →	144°	2200	GERTT GNP 18.1
6.1 NM		2.8 NM		
CATEGORY	A	B	C	D
CIRCLING	1440-1	548 (600-1)	1440-1½ 548 (600-1½)	NA

SAND SPRINGS, OKLAHOMA  
Amdt 3 09071

SAND SPRINGS/ WILLIAM R. POGUE MUNI (OWP)  
36° 11' N-96° 09' W  
**VOR/DME-A**