

SAND SPRINGS, OKLAHOMA

AL-6472 (FAA)

RNAV (GPS) RWY 17

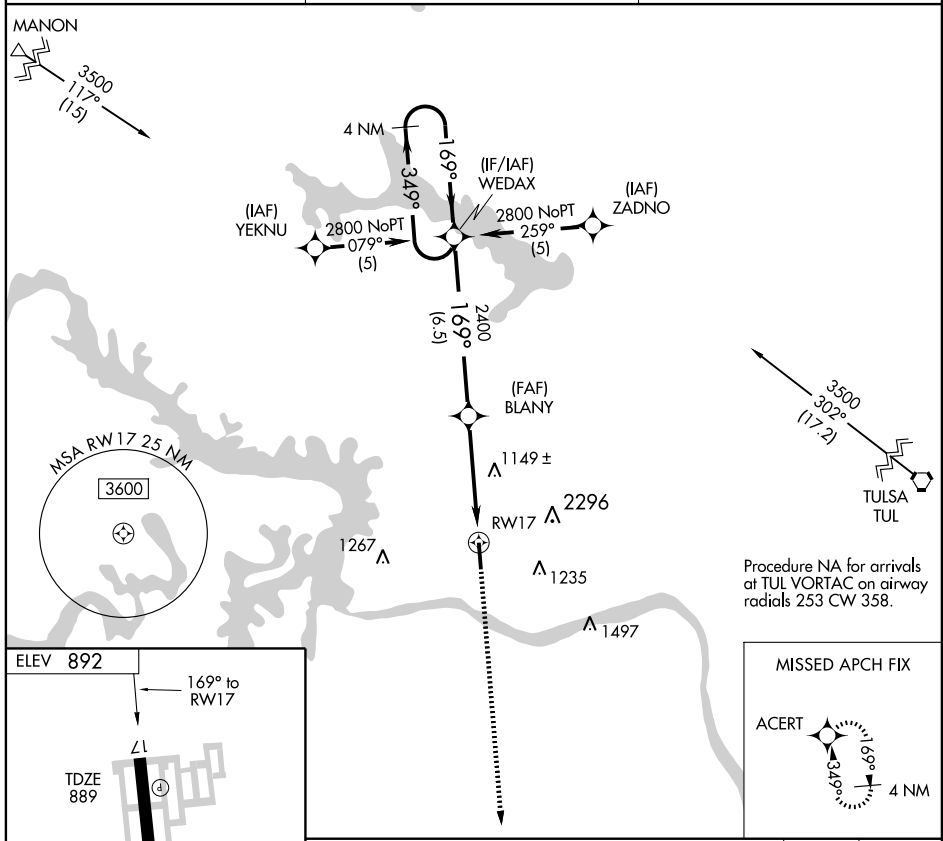
SAND SPRINGS/ WILLIAM R. POGUE MUNI (OWP)

APP CRS 169°	Rwy Idg 5799
	TDZE 889
	Apt Elev 892

▽ DME/DME RNP-0.3 NA. Visibility reduction by helicopters NA. When local altimeter setting not received, use Tulsa Intl altimeter setting and increase all MDA 60 feet.
▲ NA Increase Cat C circling visibility ¼ mile. VDP NA when using Tulsa altimeter setting.

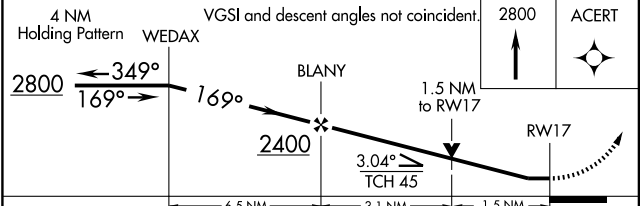
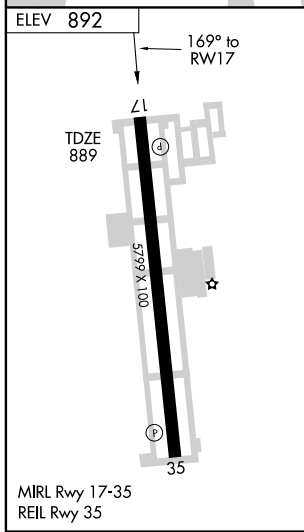
MISSED APPROACH: Climb to 2800 direct ACERT and hold.

AWOS-3 118.325	TULSA APP CON 124.0 338.3	UNICOM 122.7 (CTAF)
--------------------------	-------------------------------------	-------------------------------



SC-1, 11 MAR 2010 to 08 APR 2010

SC-1, 11 MAR 2010 to 08 APR 2010



CATEGORY	A	B	C	D
LNAV MDA	1400-1	511 (600-1)	1400-1½ 511 (600-1½)	NA
CIRCLING	1440-1	548 (600-1)	1440-1½ 548 (600-1½)	NA

SAND SPRINGS, OKLAHOMA
Orig 09071

SAND SPRINGS/ WILLIAM R. POGUE MUNI (OWP)
36°11'N-96°09'W
RNAV (GPS) RWY 17