

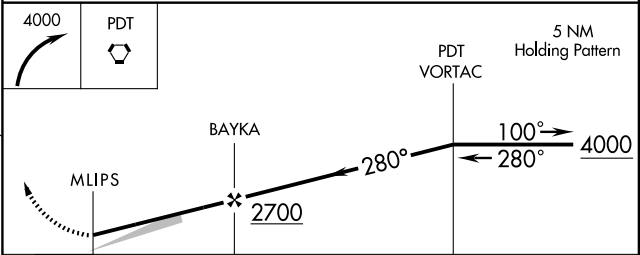
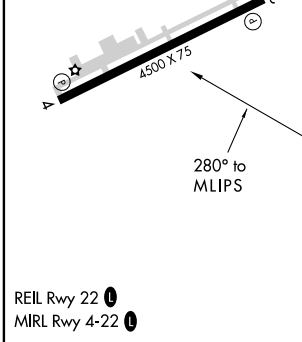
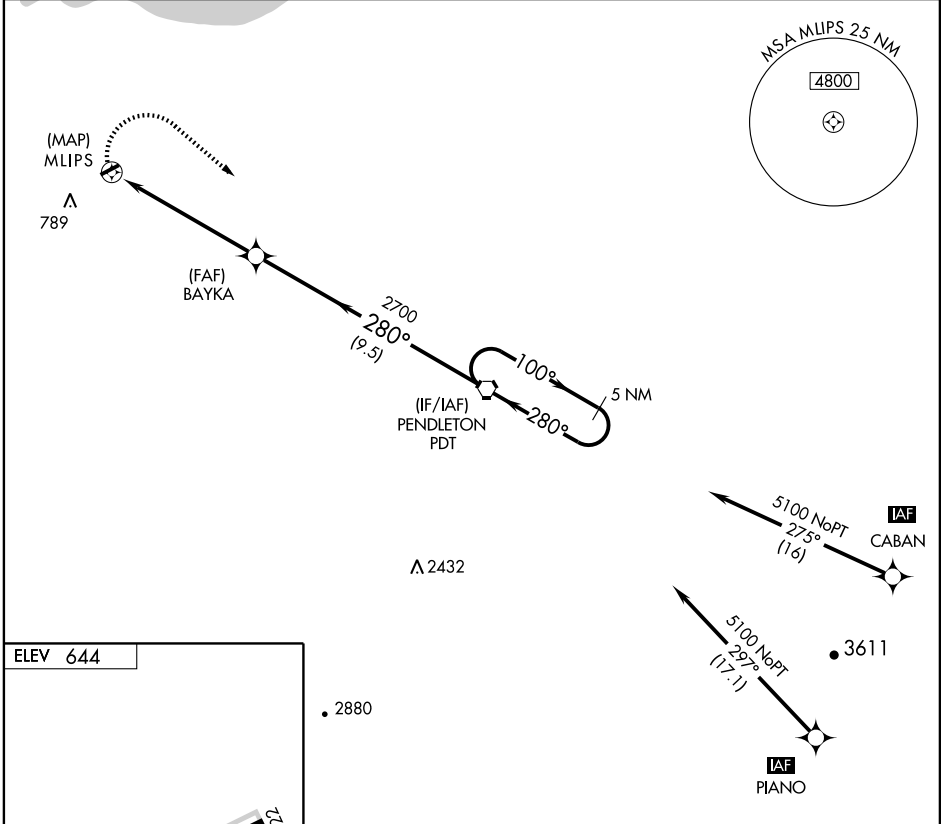
RNAV(GPS)-B
HERMISTON MUNI (H.R.I)

APP CRS 280°	Rwy Idg TDZE Apt Elev	N/A N/A 644
------------------------	-----------------------------	--

V GPS or RNP-0.3 Required. DME/DME RNP-0.3 NA. **MISSED APPROACH:** Climbing right turn to 4000 direct PDT VORTAC and hold.

A NA **IAF** ARM APPROACH MODE PRIOR TO IAF.

ASOS 135.225	CHINOOK APP CON ★ 133.15 379.15	UNICOM 122.8 (CTAF) 0
------------------------	---	--



CATEGORY	A	B	C	D
CIRCLING	1180-1	536 (600-1)	1180-1½ 536 (600-1½)	1200-2 556 (600-2)

NW-1, 11 MAR 2010 to 08 APR 2010

NW-1, 11 MAR 2010 to 08 APR 2010