

HERMISTON, OREGON

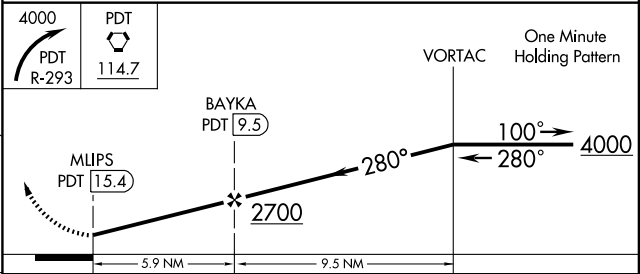
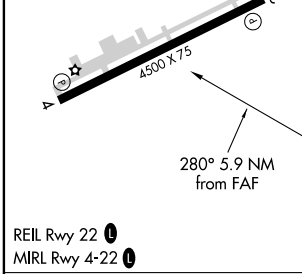
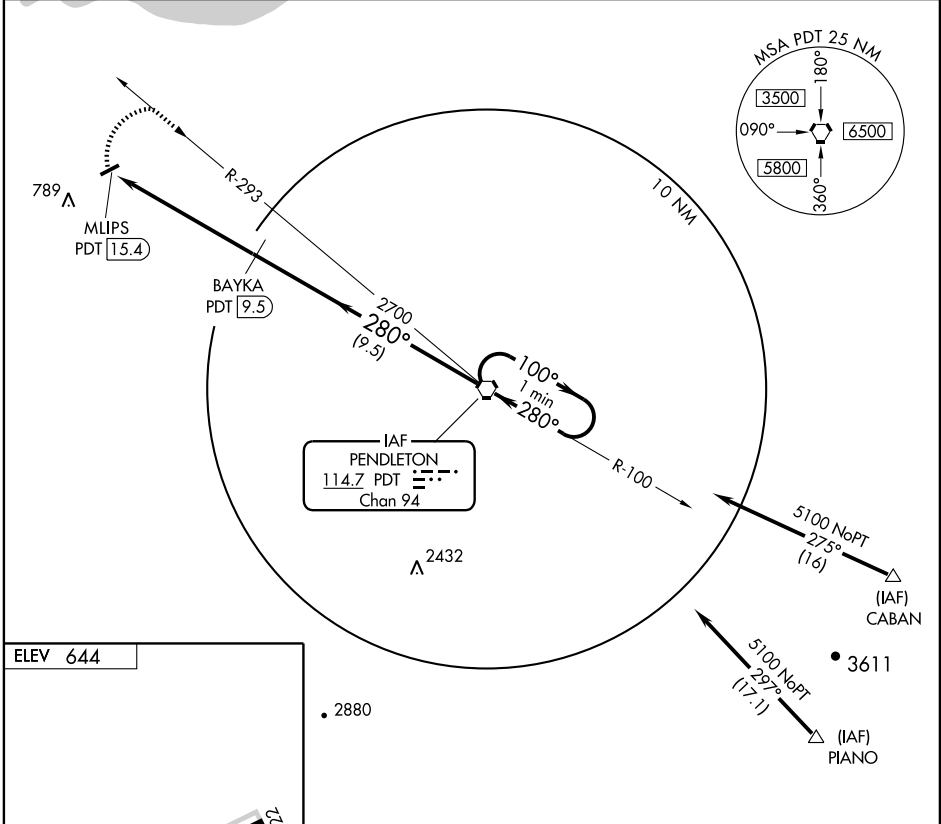
AL-6475 (FAA)

VOR/DME-A
HERMISTON MUNI (HRI)

VORTAC PDT 114.7 Chan 94	APP CRS 280°	Rwy Idg TDZE Apt Elev 644	N/A N/A 644
--	------------------------	---	--------------------------

▼ MISSED APPROACH: Climbing right turn to 4000 via PDT R-293 to PDT VORTAC and hold.

ASOS 135.225	CHINOOK APP CON * 133.15 379.15	UNICOM 122.8 (CTAF) 1
------------------------	---	--



Knots Min:Sec	CATEGORY			
	A	B	C	D
60	1180-1	536 (600-1)	1180-1½ 536 (600-1½)	1200-2 556 (600-2)
90				
120				
150				
180				

HERMISTON, OREGON
Amdt 3 09127

45°50'N-119°16'W

HERMISTON MUNI (HRI)
VOR/DME-A

NW-1, 11 MAR 2010 to 08 APR 2010

NW-1, 11 MAR 2010 to 08 APR 2010