

RNAV (GPS) RWY 19

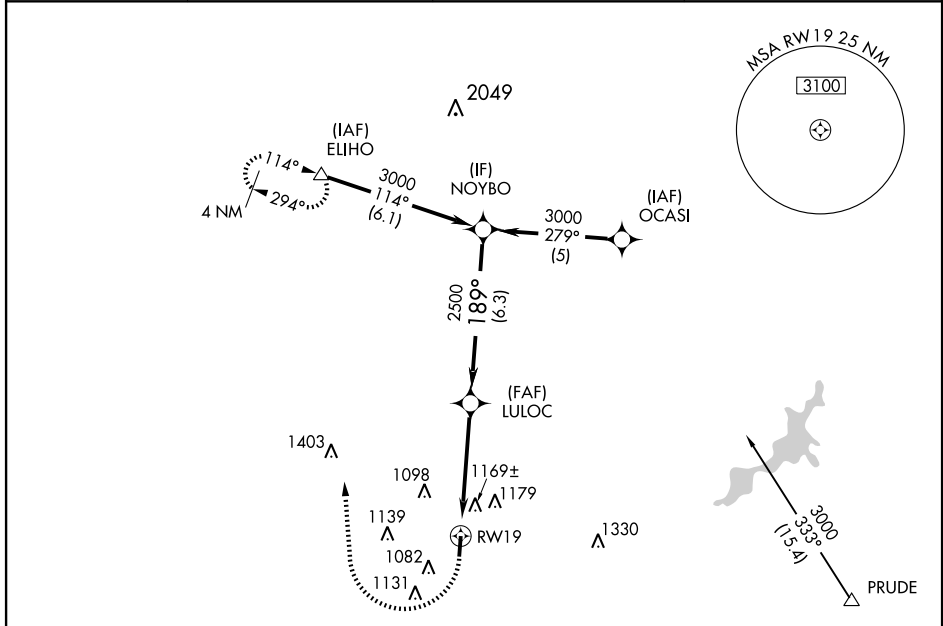
LEBANON-WARREN COUNTY (I68)

APP CRS 189°	Rwy ldg TDZE Apt Elev	4092 897 898
------------------------	-----------------------------	---

▲ NA When local altimeter not received, use Dayton-Wright Brothers altimeter setting and increase all MDAs 40 feet. DME/DME RNP-0.3 NA.
Visibility reduction by helicopters NA.

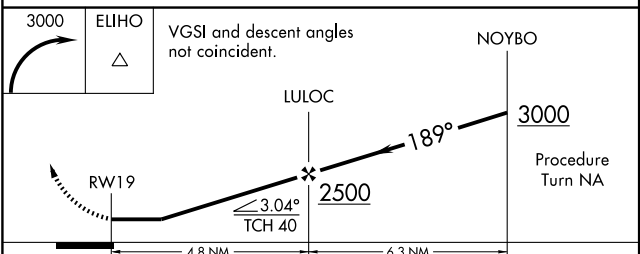
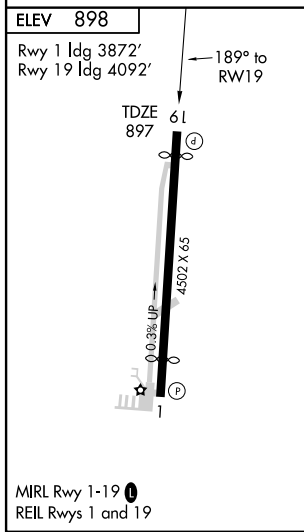
MISSED APPROACH: Climbing right turn to 3000 direct ELIHO and hold.

AWOS-3 120.55	DAYTON APP CON 118.85 127.225 327.1	DAYTON CLNC DEL 119.4	UNICOM 123.075 (CTAF) 0
-------------------------	---	---------------------------------	-----------------------------------



EC-2, 19 NOV 2009 to 17 DEC 2009

EC-2, 19 NOV 2009 to 17 DEC 2009



CATEGORY	A	B	C	D
LNAV MDA	1420-1	523 (600-1)	1420-1½ 523 (600-1½)	1420-1¾ 523 (600-1¾)
CIRCLING	1480-1	582 (600-1)	1480-1½ 582 (600-1½)	1480-2 582 (600-2)