

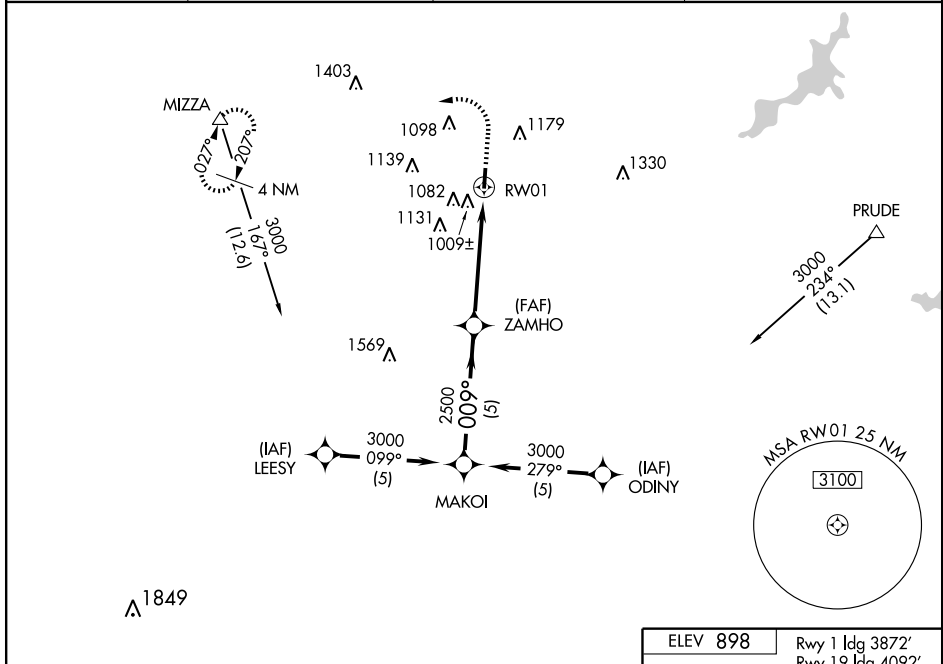
RNAV (GPS) RWY 1

LEBANON-WARREN COUNTY (I68)

APP CRS 009°	Rwy ldg TDZE Apt Elev	3872 889 898
------------------------	-----------------------------	---

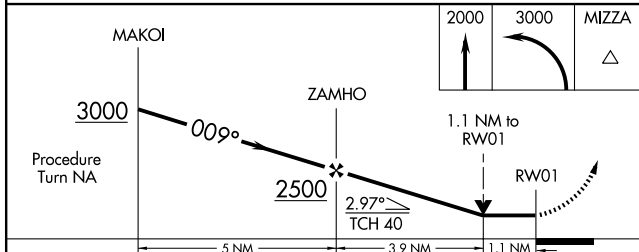
<p>▲ NA Obtain local altimeter setting on CTAF; when not received use Dayton-Wright Brothers altimeter setting. VDP NA with Dayton-Wright Brothers altimeter setting. GPS or RNP-0.3 Required. DME/DME RNP-0.3 NA.</p>	<p>MISSED APPROACH: Climb to 2000 then climbing left turn to 3000 direct MIZZA WP and hold.</p>
---	---

AWOS-3 120.55	DAYTON APP CON 118.85 127.225 327.1	DAYTON CLNC DEL 119.4	UNICOM 123.075 (CTAF) 0
-------------------------	---	---------------------------------	-----------------------------------



EC-2, 11 MAR 2010 to 08 APR 2010

EC-2, 11 MAR 2010 to 08 APR 2010



CATEGORY	A	B	C	D
LNVA MDA	1260-1 371 (400-1)		1260-1¼ 371 (400-1¼)	
CIRCLING	1380-1 482 (500-1)	1400-1 502 (600-1)	1480-1½ 582 (600-1½)	1480-2 582 (600-2)
DAYTON-WRIGHT BROTHERS ALTIMETER SETTING MINIMUMS				
LNVA MDA	1300-1 411 (500-1)		1300-1¼ 411 (500-1¼)	
CIRCLING	1420-1 522 (600-1)	1520-1¾ 622 (700-1¾)	1520-2 622 (700-2)	

