

RNAV (GPS) RWY 26

TWENTYNINE PALMS (TNP)

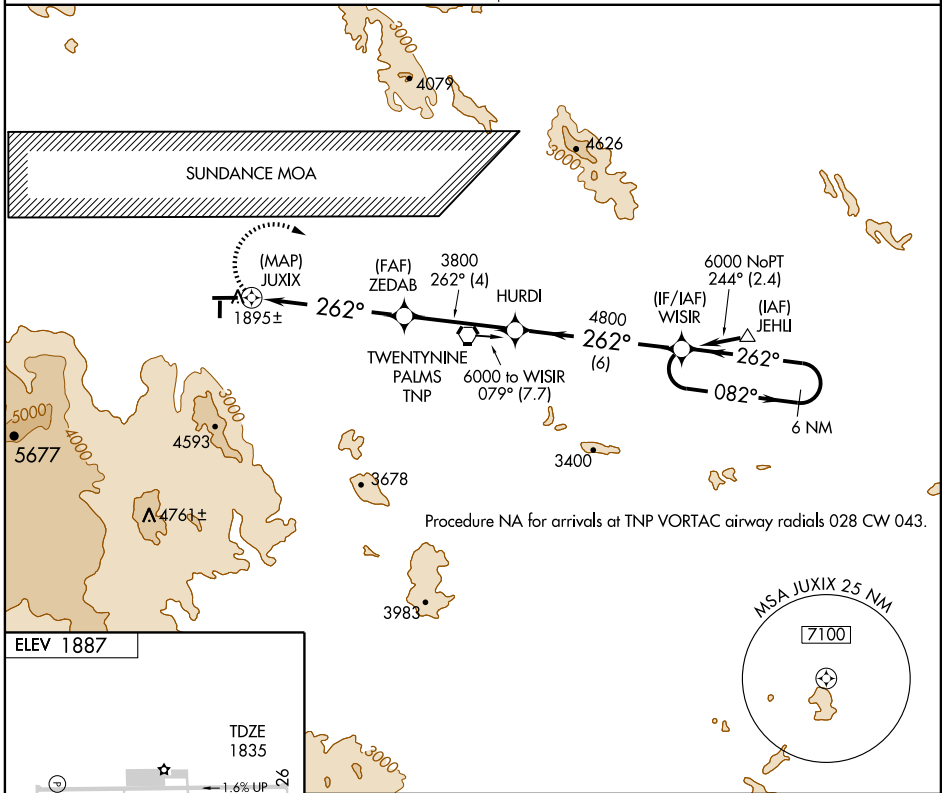
APP CRS 262°	Rwy Idg 5531
	TDZE 1835
	Apt Elev 1887

∇ Circling NA south of Rwy 8-26. DME/DME RNP-0.3 NA.
Δ NA When local altimeter setting not received, use Palm Springs Intl altimeter setting and increase all MDA 880 feet.
 VDP NA when using Palm Springs Intl altimeter setting.

MISSED APPROACH: Climbing right turn to 6000 direct WISIR and hold.

LOS ANGELES CENTER
128.15 285.6

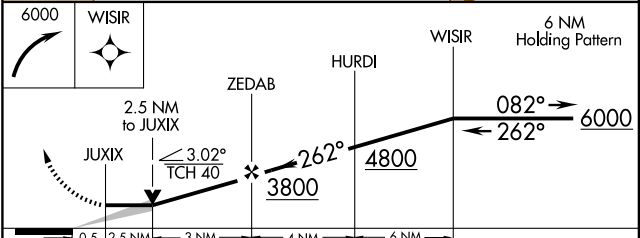
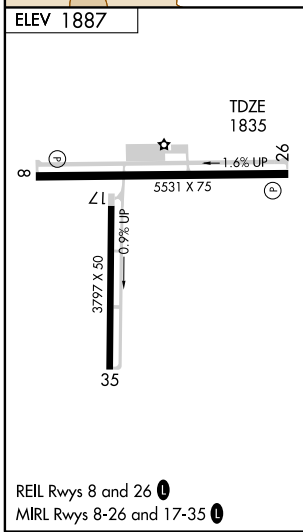
UNICOM
122.8 (CTAF) 0



Procedure NA for arrivals at TNP VORTAC airway radials 028 CW 043.

SW-3, 19 NOV 2009 to 17 DEC 2009

SW-3, 19 NOV 2009 to 17 DEC 2009



CATEGORY	A	B	C	D
LNAV MDA	2820-1¼	985 (1000-1¼)	NA	
CIRCLING	2820-1¼	933 (1000-1¼)	NA	