

WAAS CH <b>93706</b> <b>W12A</b>	APP CRS <b>124°</b>	Rwy Idg TDZE Apt Elev	<b>5000</b> <b>1017</b> <b>1022</b>
--	------------------------	-----------------------------	---

# RNAV (GPS) RWY 12

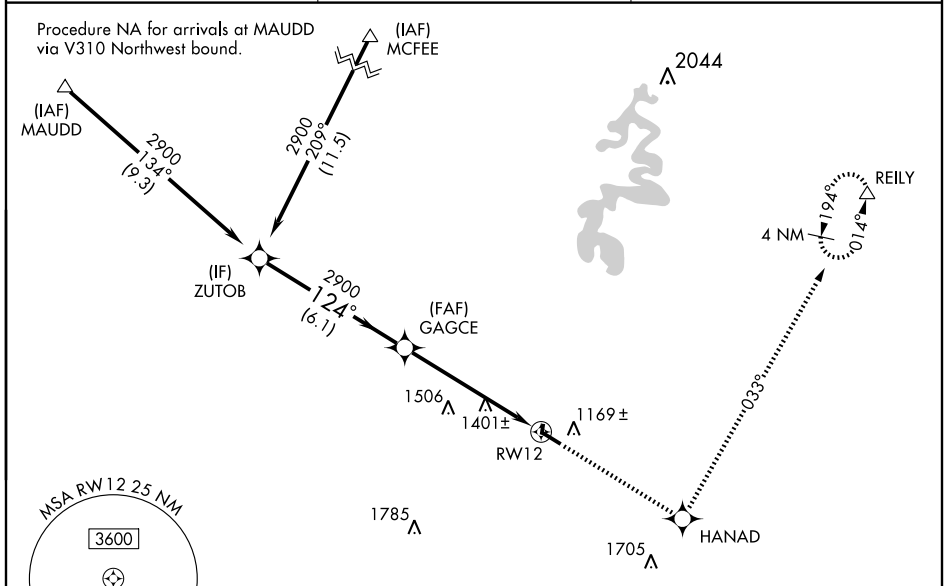
DANVILLE/STUART POWELL FIELD (DVK)

When local altimeter setting not received, use Lexington altimeter setting and increase all DAs/MDAs 80 feet, LPV all visibilities ¼ mile, LNAV/VNAV all visibilities ¼ mile, LNAV Cats C/D and Circling Cats C/D ¼ mile. For uncompensated Baro-VNAV systems, LNAV/VNAV NA below -17°C (2°F) or above 47°C (116°F). Baro-VNAV NA when using Lexington altimeter setting. Visibility reduction by helicopters NA. DME/DME RNP-0.3 NA.

**▲ NA**

MISSED APPROACH: Climb to 3800 direct HANAD and left turn via 033° track to REILY and hold.

AWOS-3 <b>128.325</b>	LEXINGTON APP CON <b>120.15 259.3</b>	UNICOM <b>122.8 (CTAF) ①</b>
--------------------------	--	---------------------------------



SE-1, 19 NOV 2009 to 17 DEC 2009

SE-1, 19 NOV 2009 to 17 DEC 2009

Procedure Turn NA		ZUTOB	GAGCE	3800 HANAD	REILY
GS 3.00° TCH 35		2900	2900	033° TRK	△
		124°	124°	VGSI and RNAV glidepath not coincident.	
		6.1 NM	5.7 NM		
CATEGORY	A	B	C	D	
LPV DA	1357-1¼		340 (400-1¼)		
LNAV/VNAV DA	1785-2¾		768 (800-2¾)		
LNAV MDA	1660-1	643 (700-1)	1660-1¼ 643 (700-1¾)	1660-2 643 (700-2)	
CIRCLING	1660-1	638 (700-1)	1660-1¼ 638 (700-1¾)	1720-2¼ 698 (700-2¼)	