

DANVILLE, KENTUCKY

AL-6504 (FAA)

WAAS CH 70506 W30A	APP CRS 305°	Rwy Idg TDZE Apt Elev	5000 1016 1022
--	------------------------	-----------------------------	---

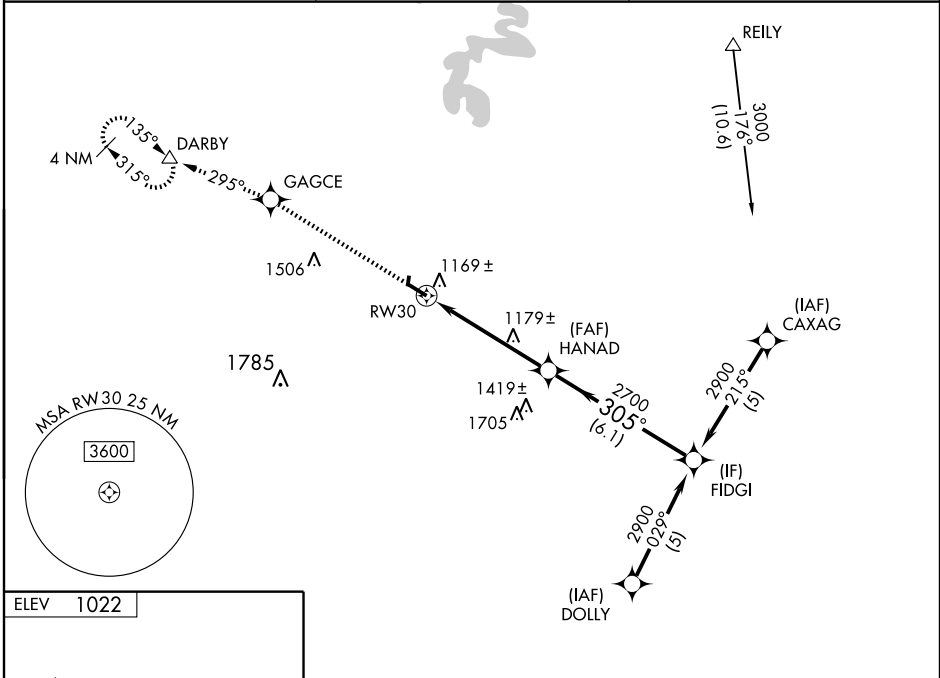
RNAV (GPS) RWY 30

DANVILLE/ STUART POWELL FIELD (DVK)

When local altimeter setting not received, use Lexington altimeter setting and increase all DAs/MDAs 80 feet, LPV all visibilities ¼ mile, LNAV/VNAV all visibilities ¼ mile, LNAV Cat C/D and Circling Cat C/D ¼ mile. For uncompensated Baro-VNAV systems, LNAV/VNAV NA below -17°C (2°F) or above 46°C (114°F). VDP and Baro-VNAV NA when using Lexington altimeter setting. Visibility reduction by helicopters NA. DME/DME RNP-0.3 NA.

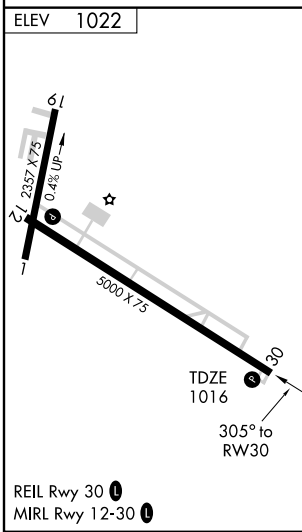
MISSED APPROACH: Climb to 3000 direct GAGCE and via 295° track to DARBY and hold.

AWOS-3 128.325	LEXINGTON APP CON 120.15 259.3	UNICOM 122.8 (CTAF) 0
--------------------------	--	---------------------------------



SE-1, 19 NOV 2009 to 17 DEC 2009

SE-1, 19 NOV 2009 to 17 DEC 2009



3000	GAGCE	TRK 295°	DARBY	Procedure Turn NA
*LNAV only.				
*1.2 NM to RW30		HANAD	FIDGI	2900
RW30		2700	305°	
1.2 NM		3.9 NM	6.1 NM	
CATEGORY	A	B	C	D
LPV DA	1282-1		266 (300-1)	
LNAV/VNAV DA	1439-1½		423 (500-1½)	
LNAV MDA	1440-1	424 (500-1)	1440-1¼	424 (500-1¼)
CIRCLING	1480-1 458 (500-1)	1560-1 538 (600-1)	1560-1½ 538 (600-1½)	1720-2¼ 698 (700-2¼)

DANVILLE, KENTUCKY
Orig 08325

37° 35'N-84° 46'W

RNAV (GPS) RWY 30