

DANVILLE, KENTUCKY

AL-6504 (FAA)

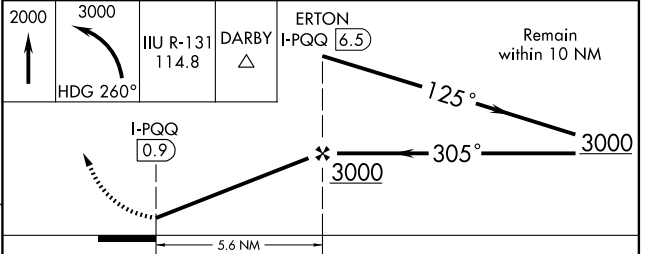
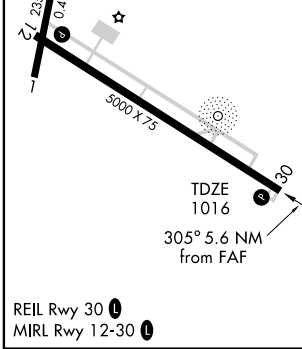
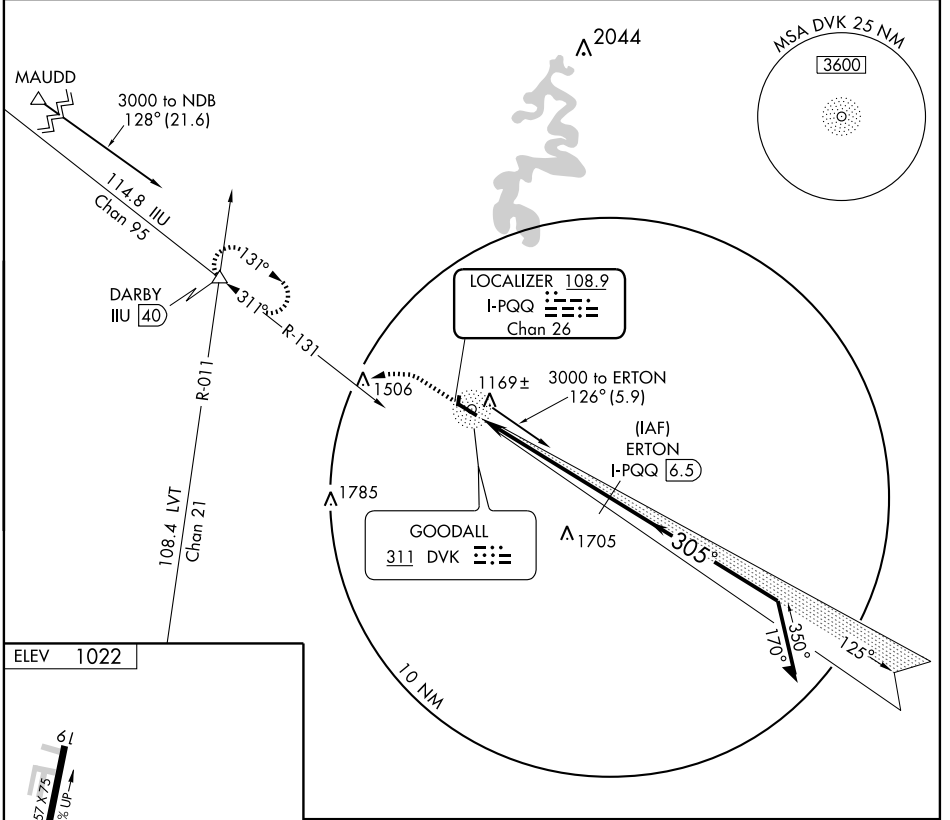
LOC/DME I-PQQ <b>108.9</b> Chan <b>26</b>	APP CRS <b>305°</b>	Rwy Idg TDZE Apt Elev <b>5000</b> <b>1016</b> <b>1022</b>
---	------------------------	--

# LOC/DME RWY 30

DANVILLE/ STUART POWELL FIELD (DVK)

**NA** If local altimeter not received, use Lexington altimeter setting and increase all MDAs 80 feet.  
**MISSED APPROACH:** Climb to 2000 then climbing left turn to 3000 via heading 260° and IJU R-131 to DARBY Int and hold.

AWOS-3 <b>128.325</b>	LEXINGTON APP CON <b>120.15 259.3</b>	UNICOM <b>122.8 (CTAF)</b>
--------------------------	--	-------------------------------



CATEGORY	A	B	C	D
S-30	1440-1	424 (500-1)	1440-1¼	424 (500-1¼)
CIRCLING	1480-1	1560-1	1560-1½	1720-2¼
	458 (500-1)	538 (600-1)	538 (600-1½)	698 (700-2¼)

DANVILLE, KENTUCKY  
Amdt 1B 08325

37°35'N-84°46'W

# DANVILLE/ STUART POWELL FIELD (DVK)

## LOC/DME RWY 30

SE-1, 19 NOV 2009 to 17 DEC 2009

SE-1, 19 NOV 2009 to 17 DEC 2009