

DANVILLE, KENTUCKY

AL-6504 (FAA)

NDB-A

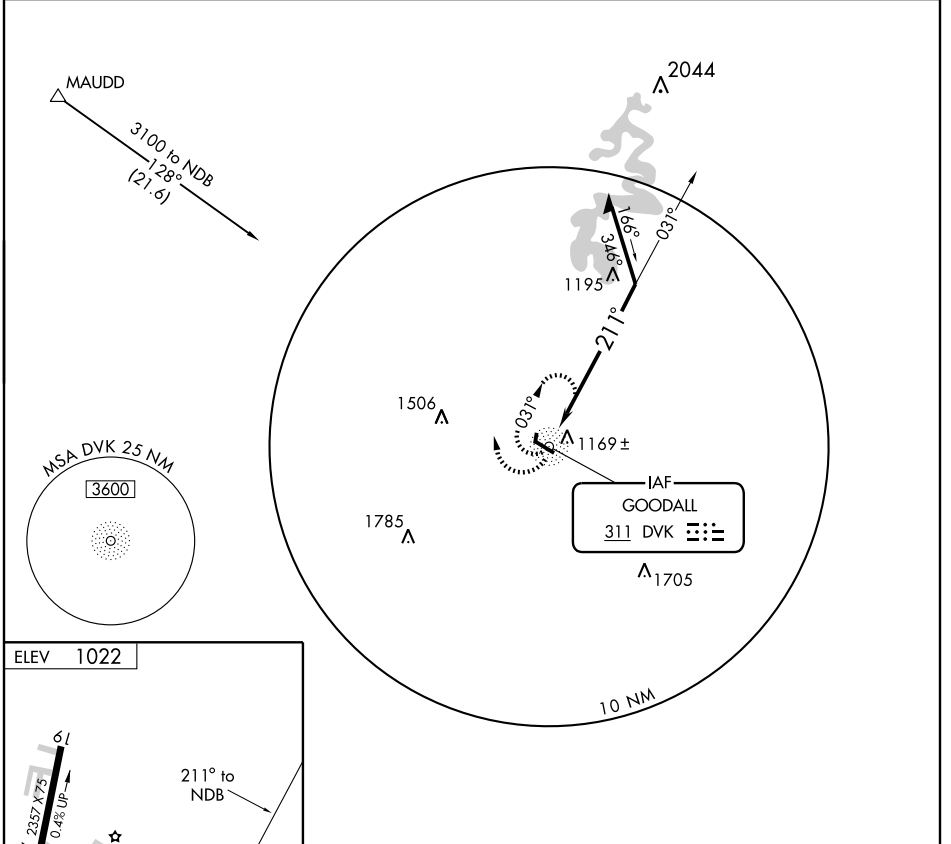
DANVILLE/ STUART POWELL FIELD (DVK)

NDB DVK <b>311</b>	APP CRS <b>211°</b>	Rwy Idg TDZE Apt Elev	<b>N/A</b> <b>N/A</b> <b>1022</b>
-----------------------	------------------------	-----------------------------	---

**▼** When local altimeter setting not received, use Lexington altimeter setting and increase all MDAs 80 feet and visibility Cats C and D ¼ mile.

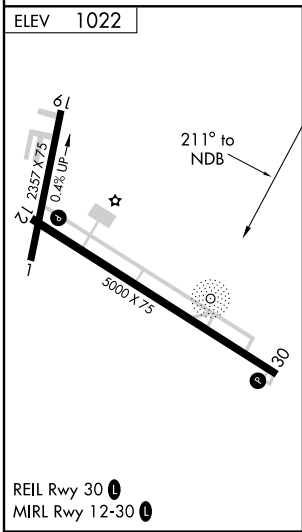
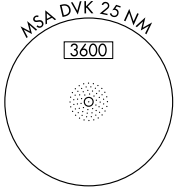
**▲NA** MISSED APPROACH: Climbing right turn to 3100 in DVK NDB holding pattern.

AWOS-3 <b>128.325</b>	LEXINGTON APP CON <b>120.15 259.3</b>	UNICOM <b>122.8 (CTAF) 0</b>
--------------------------	--	---------------------------------

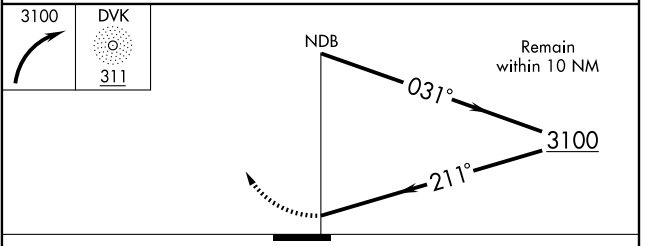


SE-1, 19 NOV 2009 to 17 DEC 2009

SE-1, 19 NOV 2009 to 17 DEC 2009



REIL Rwy 30 **0**  
MIRL Rwy 12-30 **0**



CATEGORY	A	B	C	D
CIRCLING	1600-1	578 (600-1)	1600-1½ 578 (600-1½)	1720-2¼ 698 (700-2¼)

DANVILLE, KENTUCKY  
Amdt 8 08325

37° 35' N - 84° 46' W

DANVILLE/ STUART POWELL FIELD (DVK)  
**NDB-A**