

SPRINGFIELD, KENTUCKY

AL-6510 (FAA)

VOR/DME EWO 110.8 Chan 45	APP CRS 088°	Rwy Idg 4875 TDZE 855 Apt Elev 865
---	------------------------	---

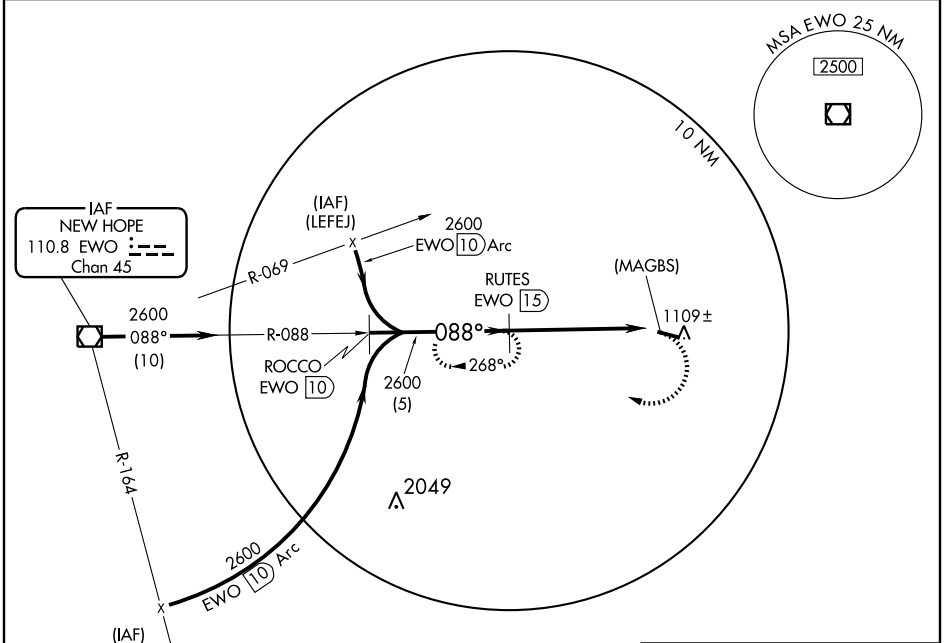
VOR/DME or GPS RWY 11

SPRINGFIELD/LEBANON-SPRINGFIELD (6I2)

Obtain local altimeter on CTAF, when not received use Louisville Intl altimeter setting.

 MISSED APPROACH: Climbing right turn to 2600 via EWO R-088 to RUTES 15 DME and hold.

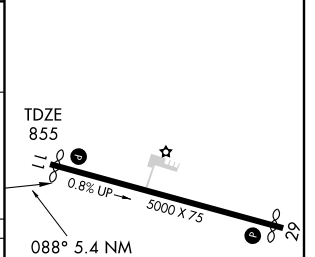
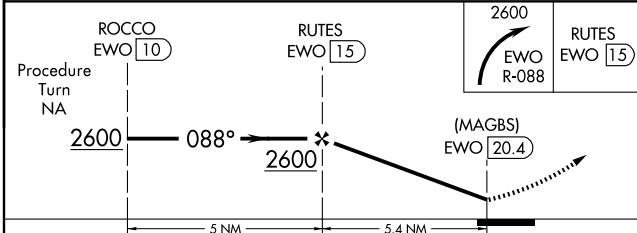
AWOS-3 119.725	INDIANAPOLIS CENTER 124.625 371.925	UNICOM 122.8 (CTAF) 0
--------------------------	---	---------------------------------



SE-1, 19 NOV 2009 to 17 DEC 2009

SE-1, 19 NOV 2009 to 17 DEC 2009

ELEV 865



CATEGORY	A	B	C	D
S-11	1260-1 405 (400-1)	1260-1¼ 405 (400-1¼)	1260-1½ 405 (400-1½)	1260-1¾ 405 (400-1¾)
CIRCLING	1420-1 555 (600-1)	1420-1¼ 555 (600-1¼)	1420-1½ 555 (600-1½)	1420-2 555 (600-2)
LOUISVILLE INTL ALTIMETER SETTING MINIMUMS				
S-11	1440-1 585 (600-1)	1440-1¼ 585 (600-1¼)	1440-1½ 585 (600-1½)	1440-1¾ 585 (600-1¾)
CIRCLING	1600-1 735 (800-1)	1600-1¼ 735 (800-1¼)	1600-2 735 (800-2)	1600-2¼ 735 (800-2¼)

MRL Rwy 11-29 0
 REL Rws 11 and 29 0

SPRINGFIELD, KENTUCKY
Amdt 3 09183

37°38'N-85°15'W
 VOR/DME or GPS RWY 11
 SPRINGFIELD/LEBANON-SPRINGFIELD (6I2)