

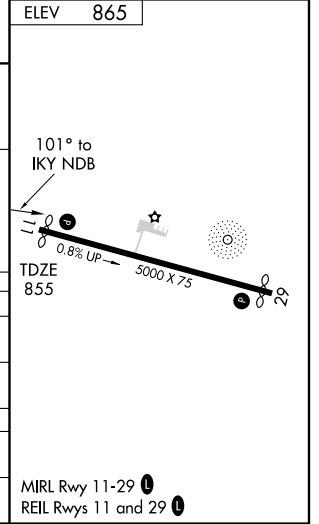
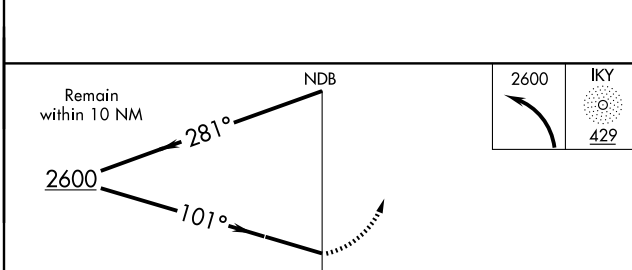
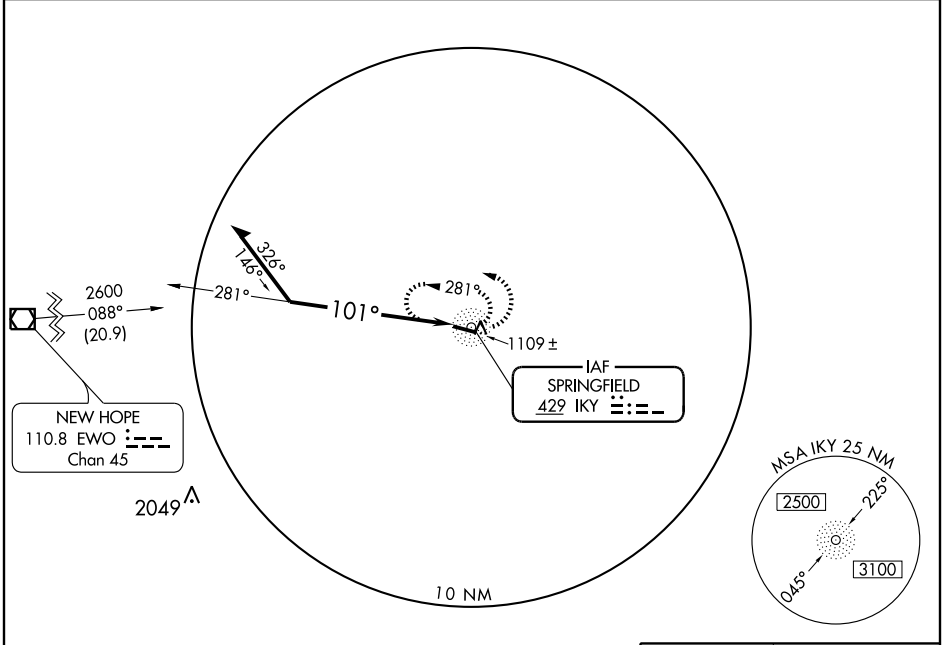
NDB RWY 11

SPRINGFIELD/LEBANON-SPRINGFIELD (6I2)

NDB IKY 429	APP CRS 101°	Rwy Idg TDZE Apt Elev	4875 855 865
-----------------------	------------------------	-----------------------------	---

▼ Obtain local altimeter on CTAF, when not received use Louisville Intl altimeter setting.
▲ NA MISSED APPROACH: Climbing left turn to 2600 in IKY NDB holding pattern.

AWOS-3 119.725	INDIANAPOLIS CENTER 124.625 371.925	UNICOM 122.8 (CTAF) ①
--------------------------	---	--



CATEGORY	A	B	C	D
S-11	1600-1 745 (800-1)	1600-1¼ 745 (800-1¼)	1600-2¼ 745 (800-2¼)	1600-2½ 745 (800-2½)
CIRCLING	1600-1 735 (800-1)	1600-1¼ 735 (800-1¼)	1600-2¼ 735 (800-2¼)	1600-2½ 735 (800-2½)
LOUISVILLE INTL ALTIMETER SETTING MINIMUMS				
S-11	1780-1¼ 925 (1000-1¼)	1780-2¾ 925 (1000-2¾)	1780-3 925 (1000-3)	
CIRCLING	1780-1¼ 915 (1000-1¼)	1780-2¾ 915 (1000-2¾)	1780-3 915 (1000-3)	

NDB RWY 11

SE-1, 19 NOV 2009 to 17 DEC 2009

SE-1, 19 NOV 2009 to 17 DEC 2009