

LAS VEGAS, NEVADA

AL-6514 (FAA)

RNAV (GPS)-B

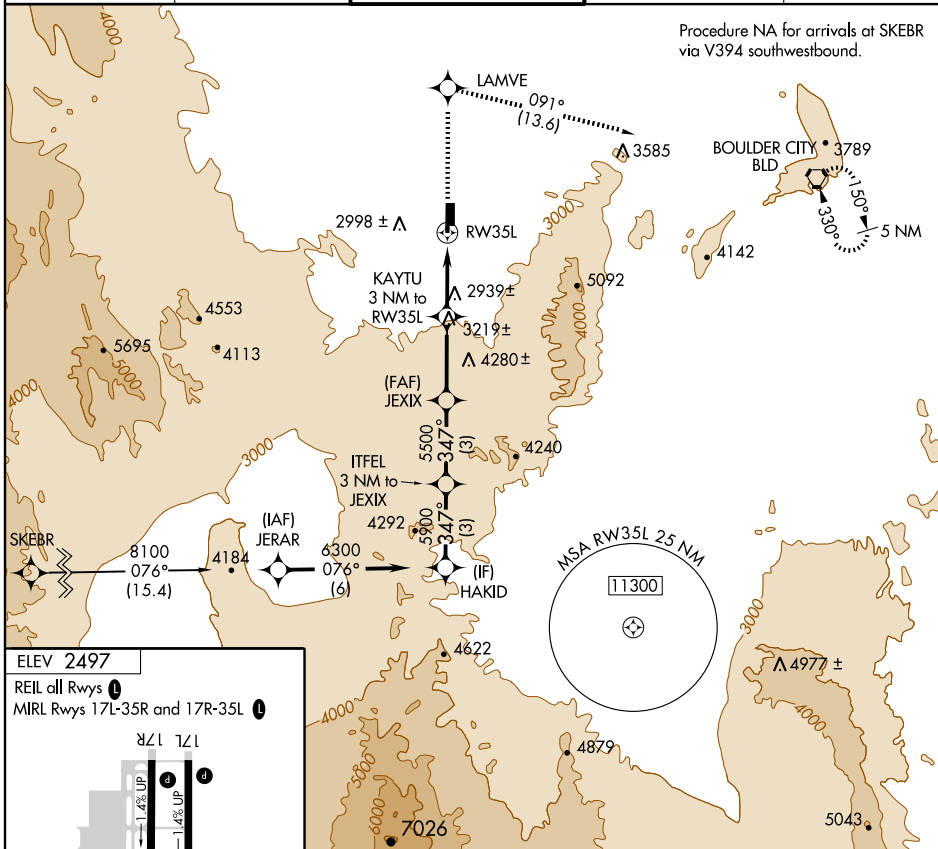
LAS VEGAS/HENDERSON EXECUTIVE (HND)

APP CRS 347°	Rwy Idg TDZE Apt Elev	N/A N/A 2497
------------------------	-----------------------------	---

▼ If local altimeter setting not received, use McCarran Intl altimeter setting.
DME/DME RNP- 0.3 NA.

▲ MISSED APPROACH: Climb to 6000 direct LAMVE and via 091° track to BLD VORTAC and hold.

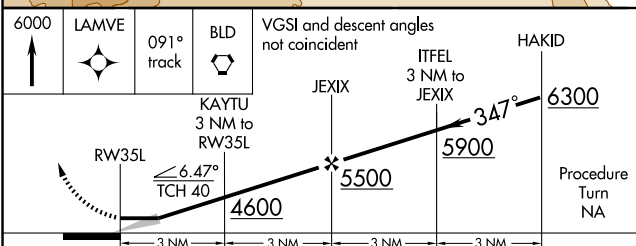
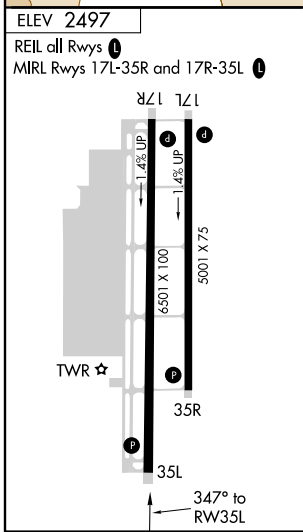
ATIS 120.775	LAS VEGAS APP CON 118.4 307.25	HENDERSON TOWER* 125.1 (CTAF) ①	GND CON 127.8	UNICOM 122.95
------------------------	--	---	-------------------------	-------------------------



Procedure NA for arrivals at SKEBR via V394 southwestbound.

SW-4, 19 NOV 2009 to 17 DEC 2009

SW-4, 19 NOV 2009 to 17 DEC 2009



CATEGORY	A	B	C	D
CIRCLING	3400-1¼	903 (1000-1¼)	NA	NA

LAS VEGAS, NEVADA
Orig 08325

LAS VEGAS/HENDERSON EXECUTIVE (HND)
35° 58' N - 115° 08' W

RNAV (GPS)-B